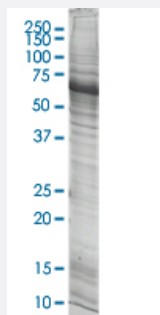


GRAP2 HEK293 Cell Transient Overexpression Lysate(Non-Denatured)

Catalog # L119T6

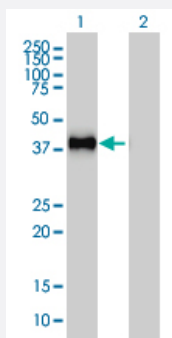
Size 100 ug

Applications



SDS-PAGE Gel

GRAP2 transfected lysate



Western Blot

Lane 1: GRAP2 transfected lysate (38 KDa).

Lane 2: Non-transfected lysate.

Specification

Transfected Cell Line	HEK293
Plasmid	pCMV-GRAP2 full length
Host	Human
Theoretical MW (kDa)	38
Lysis Buffer	Modified RIPA Lysis Buffer:50 mM Tris-HCl pH 7.4, 150 mM NaCl, 1mM EDTA, 1% Triton X-100, 0.1% SDS, 1% Sodium deoxycholate, 1mM PMSF.
Concentration	2 mg/ml

Quality Control Testing

Transient overexpression cell lysate was tested with Anti-GRAP2 antibody ([H00009402-M01](#)) by Western Blots.
SDS-PAGE Gel
GRAP2 transfected lysate
Western Blot
Lane 1: GRAP2 transfected lysate (38 KDa).
Lane 2: Non-transfected lysate.

Recommend Usage

Use it directly for immuno-precipitation, or heat lysate with SDS gel loading buffer to 95°C for 5 minutes followed by rapid cooling for western blot application. If dissociating conditions are required, add reducing agent prior to heating.

Storage Buffer

In modified RIPA Lysis Buffer.

Storage Instruction

Store at -80°C. Aliquot to avoid repeated freezing and thawing.

Applications

- Western Blot
- Immunoprecipitation

[Protocol Download](#)

Gene Info — GRAP2

Entrez GeneID [9402](#)

GeneBank Accession# [BC025692](#)

Protein Accession# [AAH25692](#)

Gene Name GRAP2

Gene Alias GADS, GRAP-2, GRB2L, GRBLG, GRID, GRPL, GrbX, Grf40, Mona, P38

Gene Description GRB2-related adaptor protein 2

Omim ID [604518](#)

Gene Ontology [Hyperlink](#)

Gene Summary

This gene encodes a member of the GRB2/Sem5/Drk family. This member is an adaptor-like protein involved in leukocyte-specific protein-tyrosine kinase signaling. Like its related family member , GRB2-related adaptor protein (GRAP), this protein contains an SH2 domain flanked by two SH3 domains. This protein interacts with other proteins, such as GRB2-associated binding protein 1 (GAB1) and the SLP-76 leukocyte protein (LCP2), through its SH3 domains. Transcript variants utilizing alternative polyA sites exist. [provided by RefSeq]

Other Designations

GRB-2-like protein|GRB2-related protein with insert domain|OTTHUMP00000028837|SH3-SH2-SH3 adaptor molecule|growth factor receptor-binding protein|growth factor receptor-bound protein 2-related adaptor protein 2|hematopoietic cell-associated adaptor protein

Pathway

- [T cell receptor signaling pathway](#)

Disease

- [Carcinoma](#)
- [Disease Progression](#)
- [Genetic Predisposition to Disease](#)
- [Hepatitis C](#)
- [Liver Neoplasms](#)
- [Tobacco Use Disorder](#)
- [Viremia](#)