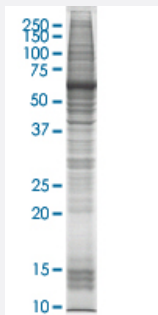


# GKN1 HEK293 Cell Transient Overexpression Lysate(Non-Denatured)

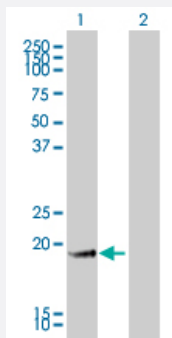
Catalog # L095T6      Size 100 ug

## Applications



### SDS-PAGE Gel

GKN1 transfected lysate



### Western Blot

Lane 1: GKN1 transfected lysate ( 20 KDa).

Lane 2: Non-transfected lysate.

## Specification

|                       |   |
|-----------------------|---|
| Transfected Cell Line | HEK293  |
| Plasmid               | pCMV-GKN1 full length   |
| Host                  | Human   |
| Theoretical MW (kDa)  | 20  |
| Lysis Buffer          | Modified RIPA Lysis Buffer:50 mM Tris-HCl pH 7.4, 150 mM NaCl, 1mM EDTA, 1% Triton X-100, 0.1% SDS, 1% Sodium deoxycholate, 1mM PMSF. |
| Concentration         | 2 mg/ml   |

**Quality Control Testing**

Transient overexpression cell lysate was tested with Anti-GKN1 antibody ([H00056287-M01](#)) by Western Blots.  
SDS-PAGE Gel  
GKN1 transfected lysate  
Western Blot  
Lane 1: GKN1 transfected lysate ( 20 KDa).  
Lane 2: Non-transfected lysate.

**Recommend Usage**

Use it directly for immuno-precipitation, or heat lysate with SDS gel loading buffer to 95°C for 5 minutes followed by rapid cooling for western blot application. If dissociating conditions are required, add reducing agent prior to heating.

**Storage Buffer**

In modified RIPA Lysis Buffer.

**Storage Instruction**

Store at -80°C. Aliquot to avoid repeated freezing and thawing.

## Applications

- Western Blot
- Immunoprecipitation

[Protocol Download](#)

## Gene Info — GKN1

**Entrez GeneID** [56287](#)

**GeneBank Accession#** [BC059778](#)

**Protein Accession#** [AAH59778](#)

**Gene Name** GKN1

**Gene Alias** AMP18, BRICD1, CA11, FOV, MGC70354, foveolin

**Gene Description** gastroke 1

**Omim ID** [606402](#)

**Gene Ontology** [Hyperlink](#)

**Gene Summary** The protein encoded by this gene is found to be down-regulated in human gastric cancer tissue as compared to normal gastric mucosa. [provided by RefSeq]

**Other Designations** 18 kDa antrum mucosa protein|BRICHOS domain containing 1

## Disease

- [Tobacco Use Disorder](#)