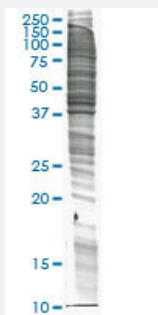


293 (human embryonic kidney,adenovirus type 5 transformed) whole cell lysate (non-denatured)

Catalog # L067V2 Size 200 ug

Applications



SDS-PAGE Gel

Specification

Product Description	Whole cell lysate (non-denatured).
Tissue	Kidney
Host	Human
Preparation Method	Cell lysate was prepared by homogenization in ice-cold modified RIPA Lysis Buffer with cocktail of protease inhibitors (Sigma). Cell debris was removed by centrifugation. Protein concentration was determined with Bradford assay (Bio-Rad protein assay, Microplate Standard assay).
Lysis Buffer	Modified RIPA Lysis Buffer: 50 mM Tris-HCl pH 7.4, 150 mM NaCl, 1mM EDTA, 1% Triton X-100, 0.1% SDS, 1% Sodium deoxycholate, 1mM PMSF.
Quality Control Testing	12.5% SDS-PAGE Stained with Coomassie Blue. SDS-PAGE Gel
Recommend Usage	Use it directly for immuno-precipitation, or heat lysate with SDS gel loading buffer to 95°C for 5 minutes followed by rapid cooling for western blot application. If dissociating conditions are required, add reducing agent prior to heating.
Storage Buffer	In modified RIPA Lysis Buffer.
Storage Instruction	Store at -80°C. Aliquot to avoid repeated freezing and thawing.

Applications

- Western Blot
- Immunoprecipitation

[Protocol Download](#)

Publication Reference

- [Rapid antibody selection by mRNA display on a microfluidic chip.](#)

Noriko Tabata, Yuko Sakuma, Yumiko Honda, Nobuhide Doi, Hideaki Takashima, Etsuko Miyamoto-Sato, Hiroshi Yanagawa.
Nucleic Acids Research 2009 May; 37(8):e64.

Application: WB-Ce, Human, HEK 293 cells