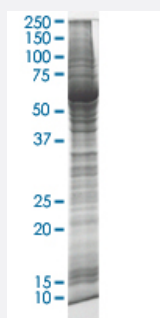


# DAAM1 HEK293 Cell Transient Overexpression Lysate(Non-Denatured)

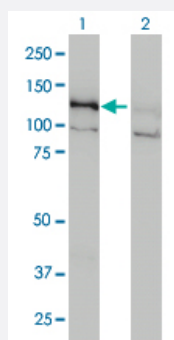
Catalog # L050T6      Size 100 ug

## Applications



### SDS-PAGE Gel

DAAM1 transfected lysate



### Western Blot

Lane 1: DAAM1 transfected lysate ( 122 KDa).

Lane 2: Non-transfected lysate.

## Specification

Transfected Cell Line	HEK293
Plasmid	pCMV-DAAM1 full length
Host	Human
Theoretical MW (kDa)	122
Lysis Buffer	Modified RIPA Lysis Buffer:50 mM Tris-HCl pH 7.4, 150 mM NaCl, 1mM EDTA, 1% Triton X-100, 0.1% SDS, 1% Sodium deoxycholate, 1mM PMSF.
Concentration	2 mg/ml

**Quality Control Testing**

Transient overexpression cell lysate was tested with Anti-DAAM1 antibody ([H00023002-M05](#)) by Western Blots.  
SDS-PAGE Gel  
DAAM1 transfected lysate  
Western Blot  
Lane 1: DAAM1 transfected lysate ( 122 KDa).  
Lane 2: Non-transfected lysate.

**Recommend Usage**

Use it directly for immuno-precipitation, or heat lysate with SDS gel loading buffer to 95°C for 5 minutes followed by rapid cooling for western blot application. If dissociating conditions are required, add reducing agent prior to heating.

**Storage Buffer**

In modified RIPA Lysis Buffer.

**Storage Instruction**

Store at -80°C. Aliquot to avoid repeated freezing and thawing.

## Applications

- Western Blot
- Immunoprecipitation

[Protocol Download](#)

## Gene Info — DAAM1

Entrez GeneID [23002](#)

GeneBank Accession# [NM\\_014992](#)

Protein Accession# [NP\\_055807](#)

Gene Name DAAM1

Gene Alias FLJ41657, KIAA0666

Gene Description dishevelled associated activator of morphogenesis 1

Omim ID [606626](#)

Gene Ontology [Hyperlink](#)

**Gene Summary**

Functions of the cell cortex, including motility, adhesion, and cytokinesis, are mediated by the reorganization of the actin cytoskeleton and recent evidence suggests a role for the Formin homology (FH) proteins in these processes. The protein encoded by this gene contains FH domains and belongs to a novel FH protein subfamily implicated in cell polarity. Wnt/Fz signaling activates the small GTPase Rho, a key regulator of cytoskeleton architecture, to control cell polarity and movement during development. Activation requires Dvl-Rho complex formation, an assembly mediated by this gene product, which is thought to function as a scaffolding protein. Evidence of alternative splicing has been observed for this gene but the full-length nature of these variants has not been determined. [provided by RefSeq]

**Other Designations**

OTTHUMP00000179033|dishevelled-associated activator of morphogenesis 1

**Pathway**

- [Wnt signaling pathway](#)

**Disease**

- [Tobacco Use Disorder](#)