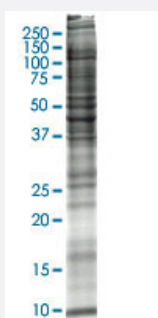


MCF-7(human breast adenocarcinoma) whole cell lysate (denatured)

Catalog # L046V1 Size 200 ug

Applications



SDS-PAGE Gel

Specification

Product Description	Whole cell lysate (denatured).
Tissue	Mammary Gland, Breast
Host	Human
Preparation Method	Cell lysate was prepared by homogenization in ice-cold modified RIPA Lysis Buffer with cocktail of p rotease inhibitors (Sigma). Cell debris was removed by centrifugation. Protein concentration was det ermined with Bradford assay (Bio-Rad protein assay, Microplate Standard assay). The lysate was mi xed in 5X Sample Buffer to become final 1X Sample Buffer as Storage Buffer. The lysate was heate d at 95°C for 5 min, and cooled rapidly.
Lysis Buffer	Modified RIPA Lysis Buffer: 50 mM Tris-HCl pH 7.4, 150 mM NaCl, 1mM EDTA, 1% Triton X-100, 0. 1% SDS, 1% Sodium deoxycholate, 1mM PMSF.
Quality Control Testing	12.5% SDS-PAGE Stained with Coomassie Blue. SDS-PAGE Gel
Recommend Usage	The lysate is ready to load on SDS-PAGE for Western blotting.
Storage Buffer	In ready-to-use 1X Sample Buffer (50 mM Tris-HCl, 2% SDS, 10% glycerol, 300 mM 2-mercaptoetha nol, 0.01% Bromophenol blue).

Storage Instruction

Store at -80°C. Aliquot to avoid repeated freezing and thawing.

Applications

- Western Blot