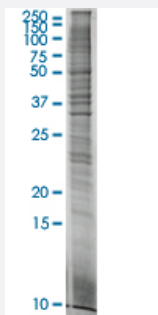


# AFP HEK293 Cell Transient Overexpression Lysate(Non-Denatured)

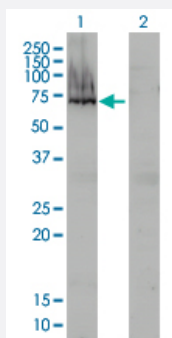
Catalog # L006T6      Size 100 ug

## Applications



### SDS-PAGE Gel

AFP transfected lysate



### Western Blot

Lane 1: AFP transfected lysate ( 69 KDa).

Lane 2: Non-transfected lysate.

## Specification

Transfected Cell Line	HEK293
Plasmid	pCMV-AFP full length
Host	Human
Theoretical MW (kDa)	69
Lysis Buffer	Modified RIPA Lysis Buffer:50 mM Tris-HCl pH 7.4, 150 mM NaCl, 1mM EDTA, 1% Triton X-100, 0.1% SDS, 1% Sodium deoxycholate, 1mM PMSF.
Concentration	2 mg/ml

**Quality Control Testing**

Transient overexpression cell lysate was tested with Anti-AFP antibody ([H00000174-M01](#)) by Western Blots.  
SDS-PAGE Gel  
AFP transfected lysate  
Western Blot  
Lane 1: AFP transfected lysate ( 69 KDa).  
Lane 2: Non-transfected lysate.

**Recommend Usage**

Use it directly for immuno-precipitation, or heat lysate with SDS gel loading buffer to 95°C for 5 minutes followed by rapid cooling for western blot application. If dissociating conditions are required, add reducing agent prior to heating.

**Storage Buffer**

In modified RIPA Lysis Buffer.

**Storage Instruction**

Store at -80°C. Aliquot to avoid repeated freezing and thawing.

## Applications

- Western Blot
- Immunoprecipitation

[Protocol Download](#)

## Gene Info — AFP

Entrez GeneID

[174](#)

GeneBank Accession#

[BC027881](#)

Protein Accession#

[AAH27881](#)

Gene Name

AFP

Gene Alias

FETA, HPAFP

Gene Description

alpha-fetoprotein

Omim ID

[104150](#)

Gene Ontology

[Hyperlink](#)

**Gene Summary**

This gene encodes alpha-fetoprotein, a major plasma protein produced by the yolk sac and the liver during fetal life. Alpha-fetoprotein expression in adults is often associated with hepatoma or teratoma. However, hereditary persistence of alpha-fetoprotein may also be found in individuals with no obvious pathology. The protein is thought to be the fetal counterpart of serum albumin, and the alpha-fetoprotein and albumin genes are present in tandem in the same transcriptional orientation on chromosome 4. Alpha-fetoprotein is found in monomeric as well as dimeric and trimeric forms, and binds copper, nickel, fatty acids and bilirubin. The level of alpha-fetoprotein in amniotic fluid is used to measure renal loss of protein to screen for spina bifida and anencephaly. [provided by RefSeq]

**Other Designations**

OTTHUMP00000160480|alpha-1-fetoprotein|alpha-fetoglobulin

**Disease**

- [Carcinoma](#)
- [Liver Cirrhosis](#)
- [Liver Neoplasms](#)