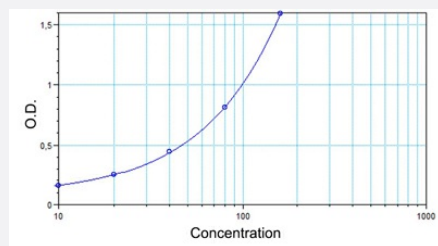


Anti-Rituximab (Human) ELISA Kit (Quantitative)

Catalog # KA6818 Size 1 Kit

Applications



The standard curve is for the purpose of illustration only and should not be used to calculate unknowns. A standard curve should be generated each time the assay is performed.

Specification

Product Description	Rituximab (Human) ELISA Kit (Quantitative) is a quantitative determination of antibodies to rituximab in serum and plasma.
Suitable Sample	Serum or Plasma
Sample Volume	20 μ L
Absorbance (nm)	450/650 nm
Detection Method	Colorimetric
Assay Type	Quantitative
Calibration Range	10 - 160 ng/mL
Limit of Detection	7.5 ng/mL
Reactivity	Human
Regulatory Status	For research use only (RUO)
Storage Instruction	Store the kit at 4°C.

Applications

- Quantification

Gene Info — MS4A1

Entrez GeneID	931
Gene Name	MS4A1
Gene Alias	B1, Bp35, CD20, LEU-16, MGC3969, MS4A2, S7
Gene Description	membrane-spanning 4-domains, subfamily A, member 1
Omim ID	112210
Gene Ontology	Hyperlink
Gene Summary	This gene encodes a member of the membrane-spanning 4A gene family. Members of this nascent protein family are characterized by common structural features and similar intron/exon splice boundaries and display unique expression patterns among hematopoietic cells and nonlymphoid tissues. This gene encodes a B-lymphocyte surface molecule which plays a role in the development and differentiation of B-cells into plasma cells. This family member is localized to 11q12, among a cluster of family members. Alternative splicing of this gene results in two transcript variants which encode the same protein. [provided by RefSeq]
Other Designations	B-lymphocyte cell-surface antigen B1 CD20 antigen CD20 receptor

Pathway

- [Hematopoietic cell lineage](#)

Disease

- [Breast cancer](#)
- [Breast Neoplasms](#)
- [Genetic Predisposition to Disease](#)
- [Lymphoma](#)

- [Neoplasm Recurrence](#)
- [Ovarian cancer](#)