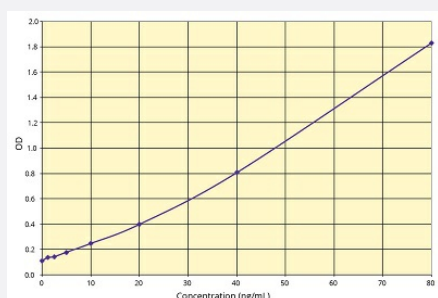


CRP (Human) ELISA Kit

Catalog # KA6559 Size 1 Kit

Applications



The standard curve is for the purpose of illustration only and should not be used to calculate unknowns. A standard curve should be generated each time the assay is performed.

Specification

Product Description	CRP (Human) ELISA Kit is an enzyme-linked immunosorbent assay for the quantitative detection of C-Reactive Protein (CRP) in serum and plasma.
Suitable Sample	Serum and Plasma
Detection Method	Colorimetric
Assay Type	Quantitative
Calibration Range	1.25 to 80 ng/mL
Limit of Detection	0.932 ng/mL
Reactivity	Human
Regulatory Status	For research use only (RUO)
Quality Control Testing	Standard curve The standard curve is for the purpose of illustration only and should not be used to calculate unknowns. A standard curve should be generated each time the assay is performed.
Storage Instruction	Store the kit at 4°C.

Applications

- Quantification