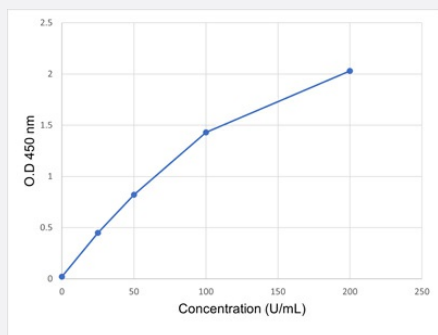


MUC1 ELISA Kit

Catalog # KA6527 Size 1 Kit

Applications



The standard curve is for the purpose of illustration only and should not be used to calculate unknowns. A standard curve should be generated each time the assay is performed.

Specification

Product Description	MUC1 ELISA Kit is an enzyme immunoassay for the quantitative determination of CA 15-3 in human serum and plasma.
Suitable Sample	Serum, Plasma (Citrate, Heparin, EDTA)
Sample Volume	10 μ L
Label	HRP-conjugate
Detection Method	Colorimetric
Assay Type	Quantitative
Calibration Range	25 to 200 U/mL
Limit of Detection	0.50 U/mL
Reactivity	Human
Regulation Status	For research use only (RUO)
Quality Control Testing	Standard Curve The standard curve is for the purpose of illustration only and should not be used to calculate unknowns. A standard curve should be generated each time the assay is performed.

Storage Instruction

Store the kit at 4°C.

Applications

- Quantification