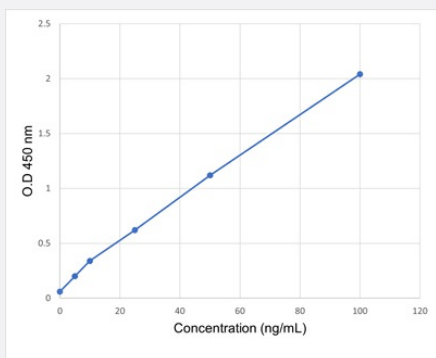


# CEA ELISA Kit

Catalog # KA6525      Size 1 Kit

## Applications



The standard curve is for the purpose of illustration only and should not be used to calculate unknowns. A standard curve should be generated each time the assay is performed.

## Specification

<b>Product Description</b>	CEA ELISA Kit is an enzyme immunoassay for the quantitative determination of carcinoembryonic antigen in human serum and plasma.
<b>Suitable Sample</b>	Serum, Plasma (Lithium)
<b>Sample Volume</b>	50 $\mu$ L
<b>Label</b>	HRP-conjugate
<b>Detection Method</b>	Colorimetric
<b>Assay Type</b>	Quantitative
<b>Calibration Range</b>	5 to 100 ng/mL
<b>Limit of Detection</b>	0.596 ng/mL
<b>Reactivity</b>	Human
<b>Regulation Status</b>	For research use only (RUO)
<b>Quality Control Testing</b>	Standard Curve The standard curve is for the purpose of illustration only and should not be used to calculate unknowns. A standard curve should be generated each time the assay is performed.

**Storage Instruction**

Store the kit at 4°C.

## Applications

- Quantification