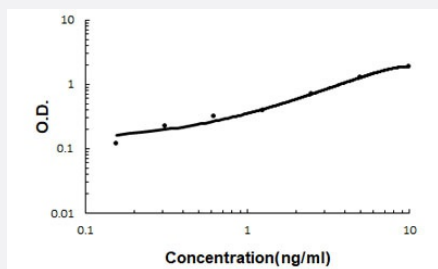


Nt5e (Mouse) ELISA Kit

Catalog # KA6291 Size 1 Kit

Applications



The standard curve is for the purpose of illustration only and should not be used to calculate unknowns. A standard curve should be generated each time the assay is performed.

Specification

Product Description	Nt5e (Mouse) ELISA Kit is a sandwich enzyme-linked immunosorbent assay for the quantitative measurement of mouse Nt5e in cell culture supernatants, serum and plasma (heparin, EDTA).
Suitable Sample	Cell Culture supernatants, Plasma (EDTA, Heparin) and Serum.
Sample Volume	100 uL
Label	HRP-conjugated
Detection Method	Colorimetric
Assay Type	Quantitative
Calibration Range	0.156 to 10 ng/mL
Reactivity	Mouse
Regulatory Status	For research use only (RUO)
Quality Control Testing	Standard curve The standard curve is for the purpose of illustration only and should not be used to calculate unknowns. A standard curve should be generated each time the assay is performed.
Storage Instruction	Store at 4°C for 6 months, at -20°C for 12 months. Avoid multiple freeze-thaw cycles.

Applications

- Quantification

Gene Info — Nt5e

Entrez GeneID	23959
Protein Accession#	Q61503
Gene Name	Nt5e
Gene Alias	2210401F01Rik, A447961, CD73, NT, Nt5, eNT
Gene Description	5' nucleotidase, ecto
Gene Ontology	Hyperlink
Gene Summary	O
Other Designations	ecto-5'-nucleotidase