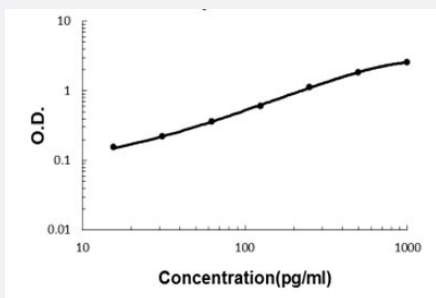


EPHA2 (Human) ELISA Kit

Catalog # KA6191

Size 1 Kit

Applications



The standard curve is for the purpose of illustration only and should not be used to calculate unknowns. A standard curve should be generated each time the assay is performed.

Specification

Product Description	EPHA2 (Human) ELISA Kit is a sandwich enzyme-linked immunosorbent assay for the quantitative measurement of human EPHA2 in cell culture supernatants, serum and plasma (heparin, EDTA).
Suitable Sample	Cell Culture supernatants, Plasma (EDTA, Heparin) and Serum.
Sample Volume	100 μ L
Label	HRP-conjugated
Detection Method	Colorimetric
Assay Type	Quantitative
Calibration Range	15.6 to 1000 pg/mL
Reactivity	Human
Regulatory Status	For research use only (RUO)
Quality Control Testing	Standard curve The standard curve is for the purpose of illustration only and should not be used to calculate unknowns. A standard curve should be generated each time the assay is performed.
Storage Instruction	Store at 4°C for 6 months, at -20°C for 12 months. Avoid multiple freeze-thaw cycles.

Applications

- Quantification

Gene Info — EPHA2

Entrez GeneID [1969](#)

Protein Accession# [P29317](#)

Gene Name EPHA2

Gene Alias ECK

Gene Description EPH receptor A2

Omim ID [176946](#)

Gene Ontology [Hyperlink](#)

Gene Summary This gene belongs to the ephrin receptor subfamily of the protein-tyrosine kinase family. EPH and EPH-related receptors have been implicated in mediating developmental events, particularly in the nervous system. Receptors in the EPH subfamily typically have a single kinase domain and an extracellular region containing a Cys-rich domain and 2 fibronectin type III repeats. The ephrin receptors are divided into 2 groups based on the similarity of their extracellular domain sequences and their affinities for binding ephrin-A and ephrin-B ligands. This gene encodes a protein that binds ephrin-A ligands. [provided by RefSeq]

Other Designations ephrin receptor EphA2|epithelial cell receptor protein tyrosine kinase|protein tyrosine kinase|receptor protein tyrosine kinase regulated by p53 and E2F-1|soluble EPHA2 variant 1

Pathway

- [Axon guidance](#)

Disease

- [Cataract](#)
- [Genetic Predisposition to Disease](#)
- [Hearing Loss](#)