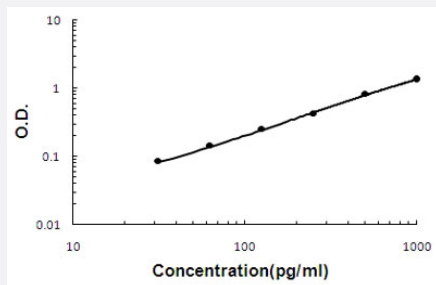


# Bmp7 (Mouse) ELISA Kit

Catalog # KA6177      Size 1 Kit

## Applications



The standard curve is for the purpose of illustration only and should not be used to calculate unknowns. A standard curve should be generated each time the assay is performed.

## Specification

<b>Product Description</b>	Bmp7 (Mouse) ELISA Kit is a sandwich enzyme-linked immunosorbent assay for the quantitative measurement of mouse Bmp7 in bone tissue, cell culture supernates, serum and plasma (heparin, EDT A).
<b>Suitable Sample</b>	Bone Tissue, Cell Culture Supernates, Plasma (EDTA, Heparin) and Serum.
<b>Sample Volume</b>	100 uL
<b>Label</b>	HRP-conjugated
<b>Detection Method</b>	Colorimetric
<b>Assay Type</b>	Quantitative
<b>Calibration Range</b>	31.2 to 2000 pg/mL
<b>Reactivity</b>	Mouse
<b>Regulatory Status</b>	For research use only (RUO)
<b>Quality Control Testing</b>	Standard curve The standard curve is for the purpose of illustration only and should not be used to calculate unknowns. A standard curve should be generated each time the assay is performed.
<b>Storage Instruction</b>	Store at 4°C for 6 months, at -20°C for 12 months. Avoid multiple freeze-thaw cycles.

## Applications

- Quantification

## Gene Info — Bmp7

Entrez GeneID	<a href="#">12162</a>
Protein Accession#	<a href="#">P23359</a>
Gene Name	Bmp7
Gene Alias	OP1
Gene Description	bone morphogenetic protein 7
Gene Ontology	<a href="#">Hyperlink</a>
Other Designations	OTTMUSP00000018052 osteogenic protein 1