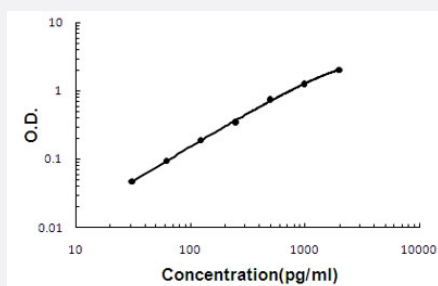


Ccl25 (Mouse) ELISA Kit

Catalog # KA6175 Size 1 Kit

Applications



The standard curve is for the purpose of illustration only and should not be used to calculate unknowns. A standard curve should be generated each time the assay is performed.

Specification

| | |
|--------------------------------|--|
| Product Description | Ccl25 (Mouse) ELISA Kit is a sandwich enzyme-linked immunosorbent assay for the quantitative measurement of mouse Ccl25 in cell culture supernates, cell lysates, serum and plasma (heparin, EDTA). |
| Suitable Sample | Cell Culture Supernates, Cell Lysates, Plasma (EDTA, Heparin) and Serum. |
| Sample Volume | 100 uL |
| Label | HRP-conjugated |
| Detection Method | Colorimetric |
| Assay Type | Quantitative |
| Calibration Range | 31.2 to 2000 pg/mL |
| Reactivity | Mouse |
| Regulatory Status | For research use only (RUO) |
| Quality Control Testing | Standard curve The standard curve is for the purpose of illustration only and should not be used to calculate unknowns. A standard curve should be generated each time the assay is performed. |
| Storage Instruction | Store at 4°C for 6 months, at -20°C for 12 months. Avoid multiple freeze-thaw cycles. |

Applications

- Quantification

Gene Info — Ccl25

| | |
|--------------------|--|
| Entrez GeneID | 20300 |
| Protein Accession# | O35903 |
| Gene Name | Ccl25 |
| Gene Alias | AI852536, CKb15, Scya25, TECK |
| Gene Description | chemokine (C-C motif) ligand 25 |
| Gene Ontology | Hyperlink |
| Other Designations | OTTMUSP00000025510 small inducible chemokine 25 small inducible cytokine A25 |