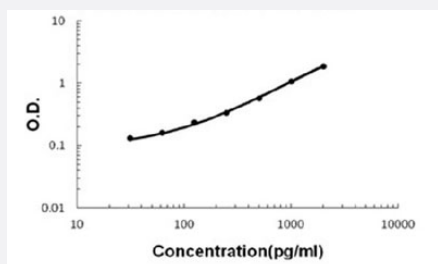


CCL23 (Human) ELISA Kit

Catalog # KA6170 Size 1 Kit

Applications



The standard curve is for the purpose of illustration only and should not be used to calculate unknowns. A standard curve should be generated each time the assay is performed.

Specification

Product Description	CCL23 (Human) ELISA Kit is a sandwich enzyme-linked immunosorbent assay for the quantitative measurement of human CCL23 in cell culture supernates, cell lysates, serum and plasma (heparin, EDTA).
Suitable Sample	Cell Culture Supernates, Cell Lysates, Plasma (EDTA, Heparin) and Serum.
Sample Volume	100 μ L
Label	HRP-conjugated
Detection Method	Colorimetric
Assay Type	Quantitative
Calibration Range	31.2 to 2000 pg/mL
Reactivity	Human
Regulatory Status	For research use only (RUO)
Quality Control Testing	Standard curve The standard curve is for the purpose of illustration only and should not be used to calculate unknowns. A standard curve should be generated each time the assay is performed.
Storage Instruction	Store at 4°C for 6 months, at -20°C for 12 months. Avoid multiple freeze-thaw cycles.

Applications

- Quantification

Gene Info — CCL23

Entrez GeneID	6368
Protein Accession#	P55773
Gene Name	CCL23
Gene Alias	CK-BETA-8, CKb8, Ckb-8, Ckb-8-1, MIP-3, MIP3, MPIF-1, SCYA23
Gene Description	chemokine (C-C motif) ligand 23
Omim ID	602494
Gene Ontology	Hyperlink
Gene Summary	<p>This gene is one of several cytokine genes clustered on the q-arm of chromosome 17. Cytokines are a family of secreted proteins involved in immunoregulatory and inflammatory processes. The CC cytokines are proteins characterized by two adjacent cysteines. The cytokine encoded by this gene displays chemotactic activity on resting T lymphocytes and monocytes, lower activity on neutrophils and no activity on activated T lymphocytes. The protein is also a strong suppressor of colony formation by a multipotential hematopoietic progenitor cell line. In addition, the product of this gene is a potent agonist at CC chemokine receptor 1. Two alternatively spliced variants encoding different active isoforms have been identified. [provided by RefSeq]</p>
Other Designations	C6 beta-chemokine OTTHUMP00000163948 hmrp-2a macrophage inflammatory protein 3 myeloid progenitor inhibitory factor 1 small inducible cytokine A23 small inducible cytokine subfamily A (Cys-Cys), member 23

Pathway

- [Chemokine signaling pathway](#)
- [Cytokine-cytokine receptor interaction](#)

Disease

- [Asthma](#)

- [Bronchiolitis](#)
- [Genetic Predisposition to Disease](#)
- [HIV Infections](#)
- [Infant](#)
- [Respiratory Syncytial Virus Infections](#)