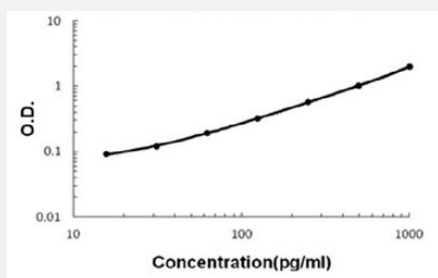


CCL15 (Human) ELISA Kit

Catalog # KA6166 Size 1 Kit

Applications



The standard curve is for the purpose of illustration only and should not be used to calculate unknowns. A standard curve should be generated each time the assay is performed.

Specification

Product Description	CCL15 (Human) ELISA Kit is a sandwich enzyme-linked immunosorbent assay for the quantitative measurement of human CCL15 in cell culture supernates, cell lysates, serum and plasma (heparin, EDTA).
Suitable Sample	Cell Culture Supernates, Cell Lysates, Plasma (EDTA, Heparin) and Serum.
Sample Volume	100 μ L
Label	HRP-conjugated
Detection Method	Colorimetric
Assay Type	Quantitative
Calibration Range	15.6 to 1000 pg/mL
Reactivity	Human
Regulatory Status	For research use only (RUO)
Quality Control Testing	Standard curve The standard curve is for the purpose of illustration only and should not be used to calculate unknowns. A standard curve should be generated each time the assay is performed.
Storage Instruction	Store at 4°C for 6 months, at -20°C for 12 months. Avoid multiple freeze-thaw cycles.

Applications

- Quantification

Gene Info — CCL15

Entrez GeneID	6359
Protein Accession#	Q16663
Gene Name	CCL15
Gene Alias	HCC-2, HMRP-2B, LKN1, Lkn-1, MIP-1d, MIP-5, NCC-3, NCC3, SCYA15, SCYL3, SY15
Gene Description	chemokine (C-C motif) ligand 15
Omim ID	601393
Gene Ontology	Hyperlink
Gene Summary	This gene, CCL15, is one of several CC cytokine genes clustered on 17q11.2. The CC cytokines are secreted proteins characterized by two adjacent cysteines. The cytokine encoded by this gene is chemotactic for T cells and monocytes and induces N-acetyl-beta-D-glucosaminidase release in monocytes. It induces changes in intracellular calcium concentration in monocytes and is thought to act through the CCR1 receptor. Read-through transcripts are expressed that include exons from the downstream cytokine gene CCL14, and are represented as GeneID: 348249. [provided by RefSeq]
Other Designations	CC chemokine 3 MIP-1 delta OTTHUMP00000163955 chemokine CC-2 leukotactin 1 macrophage inflammatory protein 5 small inducible cytokine subfamily A (Cys-Cys), member 15

Pathway

- [Chemokine signaling pathway](#)
- [Cytokine-cytokine receptor interaction](#)

Disease

- [Asthma](#)
- [Bronchiolitis](#)

- [Genetic Predisposition to Disease](#)
- [Infant](#)
- [Respiratory Syncytial Virus Infections](#)
- [Tobacco Use Disorder](#)