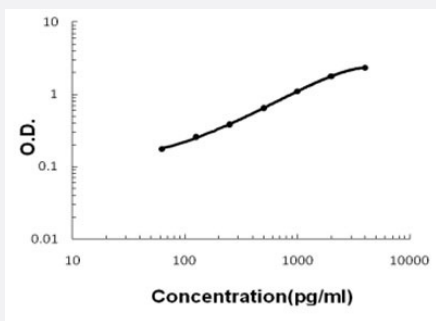


IL21 (Mouse) ELISA Kit

Catalog # KA6160 Size 1 Kit

Applications



The standard curve is for the purpose of illustration only and should not be used to calculate unknowns. A standard curve should be generated each time the assay is performed.

Specification

Product Description	IL21 (Mouse) ELISA Kit is a sandwich enzyme-linked immunosorbent assay for the quantitative measurement of mouse IL21 in cell culture supernates and serum.
Suitable Sample	Cell Culture Supernates and Plasma.
Sample Volume	100 uL
Label	HRP-conjugated
Detection Method	Colorimetric
Assay Type	Quantitative
Calibration Range	62.5 to 4000 pg/mL
Reactivity	Mouse
Regulatory Status	For research use only (RUO)
Quality Control Testing	Standard curve The standard curve is for the purpose of illustration only and should not be used to calculate unknowns. A standard curve should be generated each time the assay is performed.
Storage Instruction	Store at 4°C for 6 months, at -20°C for 12 months. Avoid multiple freeze-thaw cycles.

Applications

- Quantification

Gene Info — IL21

Entrez GeneID	60505
---------------	-----------------------

Protein Accession#	Q5SUE2
--------------------	------------------------

Gene Name	IL21
-----------	------

Gene Alias	-
------------	---

Gene Description	interleukin 21
------------------	----------------

Gene Ontology	Hyperlink
---------------	---------------------------

Other Designations	OTTMUSP00000007838
--------------------	--------------------