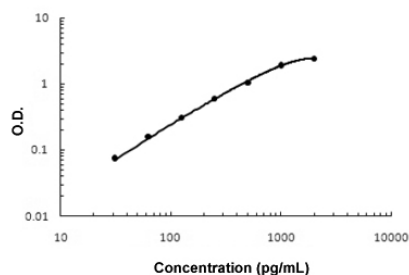


Cxcl9 (Mouse) ELISA Kit

Catalog # KA6147 Size 1 Kit

Applications



The standard curve is for the purpose of illustration only and should not be used to calculate unknowns. A standard curve should be generated each time the assay is performed.

Specification

Product Description	Cxcl9 (Mouse) ELISA Kit is a sandwich enzyme-linked immunosorbent assay for the quantitative measurement of rat Pbp in cell culture supernates, serum and plasma (EDTA).
Suitable Sample	Cell Culture Supernates, Plasma (EDTA), and Serum.
Sample Volume	100 uL
Label	HRP-conjugated
Detection Method	Colorimetric
Assay Type	Quantitative
Calibration Range	31.2 to 2000 pg/mL
Reactivity	Mouse
Regulatory Status	For research use only (RUO)
Quality Control Testing	Standard curve The standard curve is for the purpose of illustration only and should not be used to calculate unknowns. A standard curve should be generated each time the assay is performed.
Storage Instruction	Store at 4°C for 6 months, at -20°C for 12 months. Avoid multiple freeze-thaw cycles.

Applications

- Quantification

Gene Info — Cxcl9

Entrez GeneID	17329
Protein Accession#	P18340
Gene Name	Cxcl9
Gene Alias	BB139920, CMK, Mig, Scyb9, crg-10
Gene Description	chemokine (C-X-C motif) ligand 9
Gene Ontology	Hyperlink
Gene Summary	member 9
Other Designations	gamma interferon-induced monokine monokine induced by gamma interferon small inducible cytokine B subfamily (Cys-X-Cys), member 9