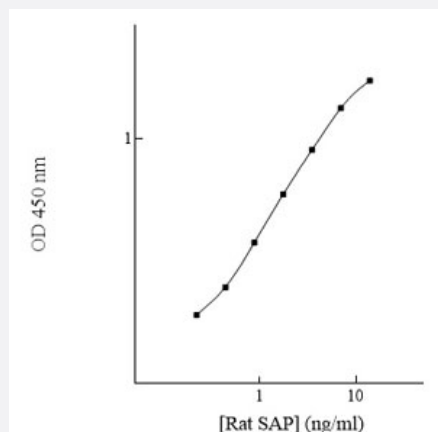


# Apcs (Rat) ELISA Kit

Catalog # KA6120

Size 1 Kit

## Applications



The standard curve is for the purpose of illustration only and should not be used to calculate unknowns. A standard curve should be generated each time the assay is performed.

## Specification

<b>Product Description</b>	Apcs (Rat) ELISA Kit is a sandwich enzyme-linked immunosorbent assay for quantitative detection of rat Apcs in serum, plasma, cell culture and Urine.
<b>Suitable Sample</b>	Serum, Plasma, Cell Culture, Urine
<b>Sample Volume</b>	50 $\mu$ L
<b>Label</b>	Peroxidase-conjugated
<b>Detection Method</b>	Colorimetric
<b>Assay Type</b>	Quantitative
<b>Calibration Range</b>	0.219 to 14 ng/mL
<b>Reactivity</b>	Rat
<b>Regulatory Status</b>	For research use only (RUO)
<b>Quality Control Testing</b>	Standard curve The standard curve is for the purpose of illustration only and should not be used to calculate unknowns. A standard curve should be generated each time the assay is performed.

**Storage Instruction**

Store components of the kit at 4°C or -20°C as described in the protocol.

**Applications**

- Quantification

**Gene Info — Apcs****Entrez GeneID** [29339](#)**Protein Accession#** [P23680](#)**Gene Name** Apcs**Gene Alias** Sap**Gene Description** amyloid P component, serum**Gene Ontology** [Hyperlink](#)**Gene Summary** O**Other Designations** serum amyloid P-component