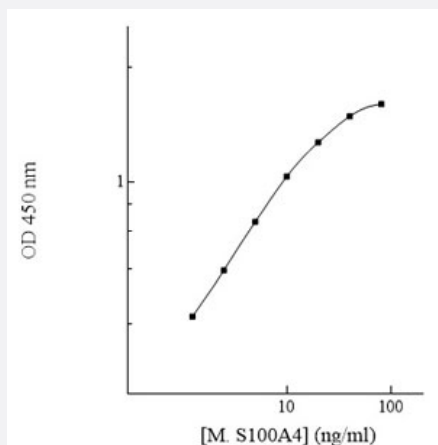


S100a4 (Mouse) ELISA Kit

Catalog # KA6107

Size 1 Kit

Applications



The standard curve is for the purpose of illustration only and should not be used to calculate unknowns. A standard curve should be generated each time the assay is performed.

Specification

Product Description	S100a4 (Mouse) ELISA Kit is a sandwich enzyme-linked immunosorbent assay for quantitative detection of mouse S100a4 in serum, plasma and cell culture.
Suitable Sample	Serum, Plasma, Cell Culture
Sample Volume	50 μ L
Label	Peroxidase-conjugated
Detection Method	Colorimetric
Assay Type	Quantitative
Calibration Range	1.25 to 80 ng/mL
Reactivity	Mouse
Regulatory Status	For research use only (RUO)
Quality Control Testing	Standard curve The standard curve is for the purpose of illustration only and should not be used to calculate unknowns. A standard curve should be generated each time the assay is performed.

Storage Instruction

Store components of the kit at 4°C or -20°C as described in the protocol.

Applications

- Quantification

Gene Info — S100a4**Entrez GeneID** [20198](#)**Protein Accession#** [P07091](#)**Gene Name** S100a4**Gene Alias** 18A2, 42a, Capl, FSp1, Mts1, PeL98, metastasin, pk9a**Gene Description** S100 calcium binding protein A4**Gene Ontology** [Hyperlink](#)**Other Designations** S100 calcium-binding protein A4|calvasculin