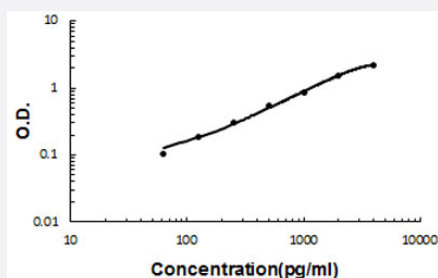


Bmper (Rat) ELISA Kit

Catalog # KA6071 Size 1 Kit

Applications



The standard curve is for the purpose of illustration only and should not be used to calculate unknowns. A standard curve should be generated each time the assay is performed.

Specification

Product Description	Bmper (Rat) ELISA Kit is a sandwich enzyme-linked immunosorbent assay for quantitative detection of rat Bmper in cell culture supernates, serum and plasma (heparin, EDTA, citrate).
Suitable Sample	Cell culture supernates, serum and plasma (heparin, EDTA, citrate)
Sample Volume	100 uL
Label	HRP-conjugated
Detection Method	Colorimetric
Assay Type	Quantitative
Calibration Range	62.5 to 4000 pg/mL
Reactivity	Rat
Regulatory Status	For research use only (RUO)
Quality Control Testing	Standard curve The standard curve is for the purpose of illustration only and should not be used to calculate unknowns. A standard curve should be generated each time the assay is performed.
Storage Instruction	Store at 4°C for six months. For long term storage store at -20°C. Avoid repeated freezing and thawing.

Applications

- Quantification

Gene Info — Bmper

Entrez GeneID	300455
Protein Accession#	F1M661
Gene Name	Bmper
Gene Alias	RGD1563373
Gene Description	BMP-binding endothelial regulator
Gene Ontology	Hyperlink
Other Designations	-