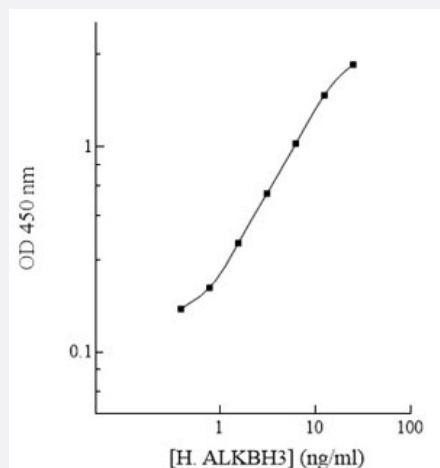


ALKBH3 (Human) ELISA Kit

Catalog # KA6065

Size 1 Kit

Applications



The standard curve is for the purpose of illustration only and should not be used to calculate unknowns. A standard curve should be generated each time the assay is performed.

Specification

Product Description	ALKBH3 (Human) ELISA Kit is a sandwich enzyme-linked immunosorbent assay for quantitative detection of human ALKBH3 in cell culture.
Suitable Sample	Cell Culture
Sample Volume	50 μ L
Label	Peroxidase-conjugated
Detection Method	Colorimetric
Assay Type	Quantitative
Calibration Range	0.391 to 25 ng/mL
Reactivity	Human
Regulatory Status	For research use only (RUO)
Quality Control Testing	Standard curve The standard curve is for the purpose of illustration only and should not be used to calculate unknowns. A standard curve should be generated each time the assay is performed.

Storage Instruction

Store components of the kit at 4°C or -20°C as described in the protocol.

Applications

- Quantification

Gene Info — ALKBH3

Entrez GeneID [221120](#)

Protein Accession# [Q96Q83](#)

Gene Name ALKBH3

Gene Alias ABH3, DEPC-1, DEPC1, MGC118790, MGC118792, MGC118793, PCA1

Gene Description alkB, alkylation repair homolog 3 (E. coli)

Omim ID [610603](#)

Gene Ontology [Hyperlink](#)

Gene Summary The Escherichia coli AlkB protein protects against the cytotoxicity of methylating agents by repair of the specific DNA lesions generated in single-stranded DNA. ALKBH2 (MIM 610602) and ALKBH3 are E. coli AlkB homologs that catalyze the removal of 1-methyladenine and 3-methylcytosine (Duncan et al., 2002 [PubMed 12486230]).[supplied by OMIM]

Other Designations alkB, alkylation repair homolog 3|prostate cancer antigen-1

Disease

- [Kidney Failure](#)