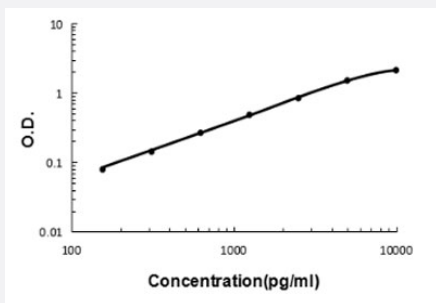


# QPCT (Human) ELISA Kit

Catalog # KA6000      Size 1 Kit

## Applications



The standard curve is for the purpose of illustration only and should not be used to calculate unknowns. A standard curve should be generated each time the assay is performed.

## Specification

<b>Product Description</b>	QPCT (Human) ELISA Kit is a sandwich enzyme-linked immunosorbent assay for quantitative detection of human QPCT in cell culture supernates, serum and plasma (heparin, EDTA).
<b>Suitable Sample</b>	Cell culture supernates, serum and plasma (heparin, EDTA)
<b>Sample Volume</b>	100 $\mu$ L
<b>Label</b>	HRP-conjugated
<b>Detection Method</b>	Colorimetric
<b>Assay Type</b>	Quantitative
<b>Calibration Range</b>	156 to 10000 pg/mL
<b>Reactivity</b>	Human
<b>Regulatory Status</b>	For research use only (RUO)
<b>Quality Control Testing</b>	Standard curve The standard curve is for the purpose of illustration only and should not be used to calculate unknowns. A standard curve should be generated each time the assay is performed.
<b>Storage Instruction</b>	Store at 4°C for six months. For long term storage store at -20°C. Avoid repeated freezing and thawing.

## Applications

- Quantification

## Gene Info — QPCT

Entrez GeneID	<a href="#">25797</a>
Protein Accession#	<a href="#">Q16769</a>
Gene Name	QPCT
Gene Alias	GCT, QC
Gene Description	glutamyl-peptide cyclotransferase
Omim ID	<a href="#">607065</a>
Gene Ontology	<a href="#">Hyperlink</a>
Gene Summary	This gene encodes human pituitary glutamyl cyclase, which is responsible for the presence of pyroglutamyl residues in many neuroendocrine peptides. The amino acid sequence of this enzyme is 86% identical to that of bovine glutamyl cyclase. [provided by RefSeq]
Other Designations	glutamyl cyclase

## Disease

- [Genetic Predisposition to Disease](#)
- [Hypertension](#)
- [Osteoporosis](#)