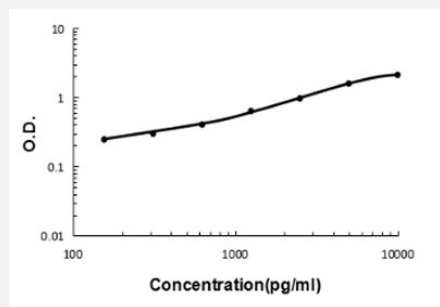


APLP1 (Human) ELISA Kit

Catalog # KA5999

Size 1 Kit

Applications



The standard curve is for the purpose of illustration only and should not be used to calculate unknowns. A standard curve should be generated each time the assay is performed.

Specification

Product Description	APLP1 (Human) ELISA Kit is a sandwich enzyme-linked immunosorbent assay for quantitative detection of human APLP1 in cell culture supernatants, serum and plasma (heparin, EDTA).
Suitable Sample	Cell culture supernatants, serum and plasma (heparin, EDTA).
Sample Volume	100 uL
Label	HRP-conjugated
Detection Method	Colorimetric
Assay Type	Quantitative
Calibration Range	156 to 10000 pg/mL
Reactivity	Human
Regulatory Status	For research use only (RUO)
Storage Instruction	Store at 4°C for six months. For long term storage store at -20°C. Avoid repeated freezing and thawing.

Applications

- Quantification

Gene Info — APLP1

Entrez GeneID [333](#)

Protein Accession# [P51693](#)

Gene Name APLP1

Gene Alias APLP

Gene Description amyloid beta (A4) precursor-like protein 1

Omim ID [104775](#)

Gene Ontology [Hyperlink](#)

Gene Summary This gene encodes a member of the highly conserved amyloid precursor protein gene family. The encoded protein is a membrane-associated glycoprotein that is cleaved by secretases in a manner similar to amyloid beta A4 precursor protein cleavage. This cleavage liberates an intracellular cytoplasmic fragment that may act as a transcriptional activator. The encoded protein may also play a role in synaptic maturation during cortical development. Alternatively spliced transcript variants encoding different isoforms have been described. [provided by RefSeq]

Other Designations amyloid precursor-like protein 1|amyloid-like protein 1