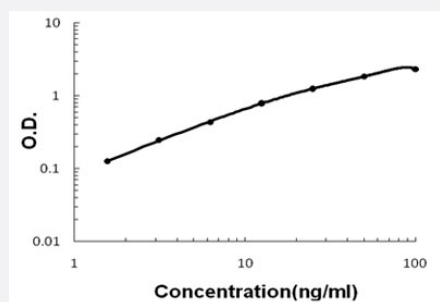


Apcs (Mouse) ELISA Kit

Catalog # KA5997 Size 1 Kit

Applications



The standard curve is for the purpose of illustration only and should not be used to calculate unknowns. A standard curve should be generated each time the assay is performed.

Specification

Product Description	Apcs (Mouse) ELISA Kit is a sandwich enzyme-linked immunosorbent assay for quantitative detection of mouse Apcs in cell culture supernates, cell lysates, serum and plasma (heparin, EDTA).
Suitable Sample	Cell culture supernates, cell lysates, serum and plasma (heparin, EDTA)
Sample Volume	100 uL
Label	HRP-conjugated
Detection Method	Colorimetric
Assay Type	Quantitative
Calibration Range	1.56 to 100 ng/mL
Reactivity	Mouse
Regulatory Status	For research use only (RUO)
Quality Control Testing	Standard curve The standard curve is for the purpose of illustration only and should not be used to calculate unknowns. A standard curve should be generated each time the assay is performed.
Storage Instruction	Store at 4°C for six months. For long term storage store at -20°C. Avoid repeated freezing and thawing.

Applications

- Quantification

Gene Info — Apcs

Entrez GeneID	20219
---------------	-----------------------

Protein Accession#	P12246
--------------------	------------------------

Gene Name	Apcs
-----------	------

Gene Alias	Sap
------------	-----

Gene Description	serum amyloid P-component
------------------	---------------------------

Gene Ontology	Hyperlink
---------------	---------------------------

Other Designations	-
--------------------	---