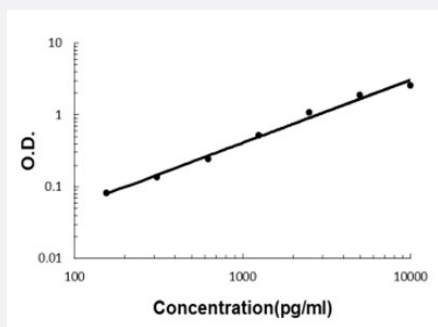


Cdh6 (Mouse) ELISA Kit

Catalog # KA5991 Size 1 Kit

Applications



The standard curve is for the purpose of illustration only and should not be used to calculate unknowns. A standard curve should be generated each time the assay is performed.

Specification

Product Description	Cdh6 (Mouse) ELISA Kit is a sandwich enzyme-linked immunosorbent assay for quantitative detection of mouse Cdh6 in cell culture supernates, serum and plasma (heparin, EDTA, citrate).
Suitable Sample	Cell culture supernates, serum and plasma (heparin, EDTA, citrate)
Sample Volume	100 μ L
Label	HRP-conjugated
Detection Method	Colorimetric
Assay Type	Quantitative
Calibration Range	156 to 10000 pg/mL
Reactivity	Mouse
Regulatory Status	For research use only (RUO)
Quality Control Testing	Standard curve The standard curve is for the purpose of illustration only and should not be used to calculate unknowns. A standard curve should be generated each time the assay is performed.
Storage Instruction	Store at 4°C for six months. For long term storage store at -20°C. Avoid repeated freezing and thawing.

Applications

- Quantification

Gene Info — Cdh6

Entrez GeneID	12563
---------------	-----------------------

Protein Accession#	P97326
--------------------	------------------------

Gene Name	Cdh6
-----------	------

Gene Alias	K-cadherin, MGC129338, MGC129360, cad6, cadherin-6
------------	--

Gene Description	cadherin 6
------------------	------------

Gene Ontology	Hyperlink
---------------	---------------------------

Other Designations	-
--------------------	---