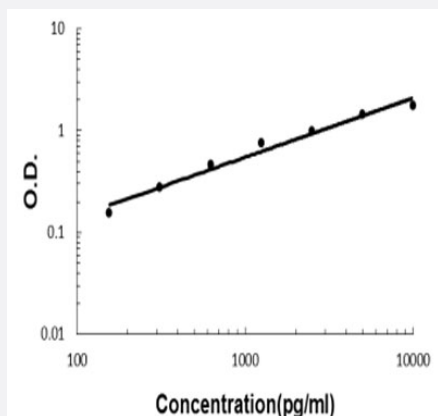


Cdh4 (Mouse) ELISA Kit

Catalog # KA5987 Size 1 Kit

Applications



The standard curve is for the purpose of illustration only and should not be used to calculate unknowns. A standard curve should be generated each time the assay is performed.

Specification

Product Description	Cdh4 (Mouse) ELISA Kit is a sandwich enzyme-linked immunosorbent assay for quantitative detection of mouse Cdh4 in cell culture supernates, serum and plasma (heparin, EDTA, citrate).
Suitable Sample	Cell culture supernates, serum and plasma (heparin, EDTA, citrate)
Sample Volume	100 uL
Label	HRP-conjugated
Detection Method	Colorimetric
Assay Type	Quantitative
Calibration Range	156 to 10000 pg/mL
Reactivity	Mouse
Regulatory Status	For research use only (RUO)
Quality Control Testing	Standard curve The standard curve is for the purpose of illustration only and should not be used to calculate unknowns. A standard curve should be generated each time the assay is performed.

Storage Instruction

Store at 4°C for six months. For long term storage store at -20°C.
Avoid repeated freezing and thawing.

Applications

- Quantification

Gene Info — Cdh4

Entrez GeneID	12561
----------------------	-----------------------

Protein Accession#	P39038
---------------------------	------------------------

Gene Name	Cdh4
------------------	------

Gene Alias	AW120700, R-cadherin, Rcad
-------------------	----------------------------

Gene Description	cadherin 4
-------------------------	------------

Gene Ontology	Hyperlink
----------------------	---------------------------

Other Designations	OTTMUSP00000017372 retina cadherin
---------------------------	------------------------------------