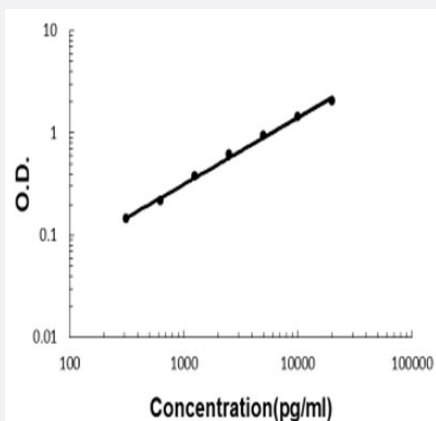


# Cd99l2 (Mouse) ELISA Kit

Catalog # KA5985      Size 1 Kit

## Applications



The standard curve is for the purpose of illustration only and should not be used to calculate unknowns. A standard curve should be generated each time the assay is performed.

## Specification

<b>Product Description</b>	Cd99l2 (Mouse) ELISA Kit is a sandwich enzyme-linked immunosorbent assay for quantitative detection of mouse Cd99l2 in cell culture supernates, serum and plasma (heparin, EDTA, citrate).
<b>Suitable Sample</b>	Cell culture supernates, serum and plasma (heparin, EDTA, citrate)
<b>Sample Volume</b>	100 uL
<b>Label</b>	HRP-conjugated
<b>Detection Method</b>	Colorimetric
<b>Assay Type</b>	Quantitative
<b>Calibration Range</b>	312 to 20000 pg/mL
<b>Reactivity</b>	Mouse
<b>Regulatory Status</b>	For research use only (RUO)
<b>Quality Control Testing</b>	Standard curve The standard curve is for the purpose of illustration only and should not be used to calculate unknowns. A standard curve should be generated each time the assay is performed.

**Storage Instruction**

Store at 4°C for six months. For long term storage store at -20°C.  
Avoid repeated freezing and thawing.

## Applications

- Quantification

## Gene Info — Cd99l2

Entrez GeneID	<a href="#">171486</a>
Protein Accession#	<a href="#">Q8BIF0</a>
Gene Name	Cd99l2
Gene Alias	AW548191, Mic2l1, Xap89
Gene Description	CD99 antigen-like 2
Gene Ontology	<a href="#">Hyperlink</a>
Other Designations	MIC2 (monoclonal Imperial Cancer Research Fund 2)-like 1 MIC2 like-1 OTTMUSP00000019527