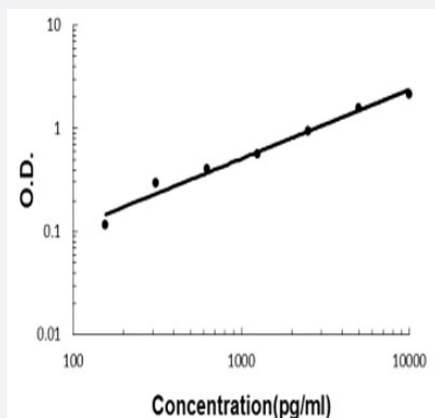


Cntn1 (Rat) ELISA Kit

Catalog # KA5948

Size 1 Kit

Applications



The standard curve is for the purpose of illustration only and should not be used to calculate unknowns. A standard curve should be generated each time the assay is performed.

Specification

Product Description	Cntn1 (Rat) ELISA Kit is a sandwich enzyme-linked immunosorbent assay for quantitative detection of rat Cntn1 in cell culture supernates, serum and plasma (heparin, EDTA).
Suitable Sample	Cell culture supernates, serum and plasma (heparin, EDTA)
Sample Volume	100 uL
Label	HRP-conjugated
Detection Method	Colorimetric
Assay Type	Quantitative
Calibration Range	156 to 10000 pg/mL
Reactivity	Rat
Regulatory Status	For research use only (RUO)
Quality Control Testing	Standard curve The standard curve is for the purpose of illustration only and should not be used to calculate unknowns. A standard curve should be generated each time the assay is performed.

Storage Instruction

Store at 4°C for six months. For long term storage store at -20°C.
Avoid repeated freezing and thawing.

Applications

- Quantification

Gene Info — Cntn1

Entrez GeneID	117258
---------------	------------------------

Protein Accession#	Q63198
--------------------	------------------------

Gene Name	Cntn1
-----------	-------

Gene Alias	F3
------------	----

Gene Description	contactin 1
------------------	-------------

Gene Ontology	Hyperlink
---------------	---------------------------

Other Designations	-
--------------------	---