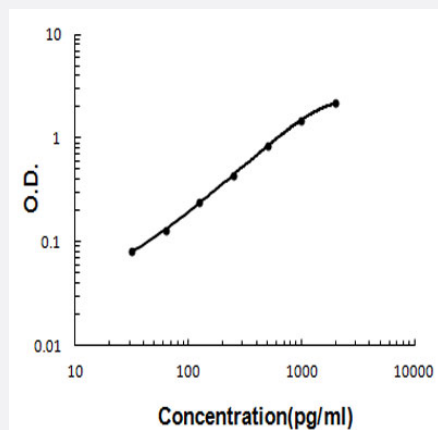


TINAGL1 (Human) ELISA Kit

Catalog # KA5944

Size 1 Kit

Applications



The standard curve is for the purpose of illustration only and should not be used to calculate unknowns. A standard curve should be generated each time the assay is performed.

Specification

Product Description	TINAGL1 (Human) ELISA Kit is a sandwich enzyme-linked immunosorbent assay for quantitative detection of human TINAGL1 in cell culture supernates, serum and plasma (heparin, EDTA, citrate).
Suitable Sample	Cell culture supernates, serum and plasma (heparin, EDTA, citrate)
Sample Volume	100 uL
Label	HRP-conjugated
Detection Method	Colorimetric
Assay Type	Quantitative
Calibration Range	31.2 to 2000 pg/mL
Reactivity	Human
Regulatory Status	For research use only (RUO)
Quality Control Testing	Standard curve The standard curve is for the purpose of illustration only and should not be used to calculate unknowns. A standard curve should be generated each time the assay is performed.

Storage Instruction

Store at 4°C for six months. For long term storage store at -20°C.
Avoid repeated freezing and thawing.

Applications

- Quantification

Gene Info — TINAGL1

Entrez GeneID	64129
Protein Accession#	Q9GZM7
Gene Name	TINAGL1
Gene Alias	ARG1, LCN7, LIECG3, TINAGRP
Gene Description	tubulointerstitial nephritis antigen-like 1
Gene Ontology	Hyperlink
Other Designations	OTTHUMP00000003956 P3ECSL TINAG-like 1 androgen-regulated gene 1 glucocorticoid-inducible protein lipocalin 7 oxidized-LDL responsive gene 2 tubulointerstitial nephritis antigen-related protein