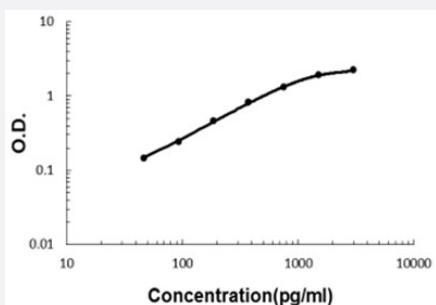


GFRA3 (Human) ELISA Kit

Catalog # KA5928

Size 1 Kit

Applications



The standard curve is for the purpose of illustration only and should not be used to calculate unknowns. A standard curve should be generated each time the assay is performed.

Specification

Product Description	GFRA3 (Human) ELISA Kit is a sandwich enzyme-linked immunosorbent assay for quantitative detection of human GFRA3 in cell culture supernatants, serum and plasma (heparin, EDTA, citrate).
Suitable Sample	Cell culture supernatants, serum and plasma (heparin, EDTA, citrate)
Sample Volume	100 uL
Label	HRP-conjugated
Detection Method	Colorimetric
Assay Type	Quantitative
Calibration Range	46.9 to 3000 pg/mL
Reactivity	Human
Regulatory Status	For research use only (RUO)
Storage Instruction	Store at 4°C for six months. For long term storage store at -20°C. Avoid repeated freezing and thawing.

Applications

- Quantification

Gene Info — GFRA3

Entrez GeneID	2676
Protein Accession#	O60609
Gene Name	GFRA3
Gene Alias	-
Gene Description	GDNF family receptor alpha 3
Omim ID	605710
Gene Ontology	Hyperlink
Gene Summary	The protein encoded by this gene is a glycosylphosphatidylinositol(GPI)-linked cell surface receptor and a member of the GDNF receptor family. It forms a signaling receptor complex with RET tyrosine kinase receptor and binds the ligand, artemin. [provided by RefSeq]
Other Designations	GPI-linked receptor glial cell line-derived neurotrophic factor receptor alpha-3

Disease

- [Carcinoma](#)
- [Hirschsprung Disease](#)
- [Schizophrenia](#)
- [Thyroid Neoplasms](#)