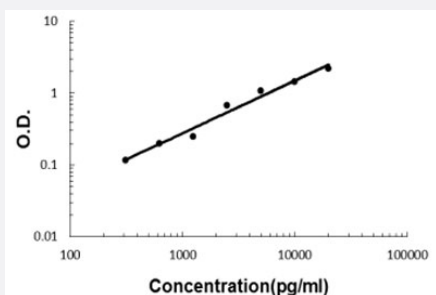


# GFRA2 (Human) ELISA Kit

Catalog # KA5925      Size 1 Kit

## Applications



The standard curve is for the purpose of illustration only and should not be used to calculate unknowns. A standard curve should be generated each time the assay is performed.

## Specification

<b>Product Description</b>	GFRA2 (Human) ELISA Kit is a sandwich enzyme-linked immunosorbent assay for quantitative detection of human GFRA2 in cell culture supernates, serum and plasma (heparin, EDTA, citrate).
<b>Suitable Sample</b>	Cell culture supernates, serum and plasma (heparin, EDTA, citrate)
<b>Sample Volume</b>	100 uL
<b>Label</b>	HRP-conjugated
<b>Detection Method</b>	Colorimetric
<b>Assay Type</b>	Quantitative
<b>Calibration Range</b>	312 to 20000 pg/mL
<b>Reactivity</b>	Human
<b>Regulatory Status</b>	For research use only (RUO)
<b>Quality Control Testing</b>	Standard curve The standard curve is for the purpose of illustration only and should not be used to calculate unknowns. A standard curve should be generated each time the assay is performed.
<b>Storage Instruction</b>	Store at 4°C for six months. For long term storage store at -20°C. Avoid repeated freezing and thawing.

## Applications

- Quantification

## Gene Info — GFRA2

Entrez GeneID	<a href="#">2675</a>
Protein Accession#	<a href="#">O00451</a>
Gene Name	GFRA2
Gene Alias	GDNFRB, NRTNR-ALPHA, NTNRA, RETL2, TRNR2
Gene Description	GDNF family receptor alpha 2
Omim ID	<a href="#">601956</a>
Gene Ontology	<a href="#">Hyperlink</a>
Gene Summary	<p>Glial cell line-derived neurotrophic factor (GDNF) and neurturin (NTN) are two structurally related, potent neurotrophic factors that play key roles in the control of neuron survival and differentiation. The protein encoded by this gene is a member of the GDNF receptor family. It is a glycosylphosphatidylinositol(GPI)-linked cell surface receptor for both GDNF and NTN, and mediates activation of the RET tyrosine kinase receptor. This encoded protein acts preferentially as a receptor for NTN compared to its other family member, GDNF family receptor alpha 1. This gene is a candidate gene for RET-associated diseases. Multiple transcript variants encoding different isoforms have been found for this gene. [provided by RefSeq]</p>
Other Designations	GFR-alpha 2 PHlinked cell-surface accessory protein RET ligand 2 TGF-beta related neurotrophic factor receptor 2 TRN receptor, GPI-anchored glial cell line derived neurotrophic factor receptor, beta glial cell line-derived neurotrophic factor family rece

## Disease

- [Carcinoma](#)
- [Dyskinesia](#)
- [Genetic Predisposition to Disease](#)
- [Hirschsprung Disease](#)
- [Nasal Polyps](#)

- [Psychiatric Status Rating Scales](#)
- [Psychometrics](#)
- [Schizophrenia](#)
- [Thyroid Neoplasms](#)