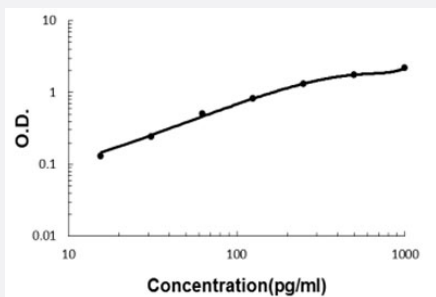


Gfra1 (Mouse) ELISA Kit

Catalog # KA5923 Size 1 Kit

Applications



The standard curve is for the purpose of illustration only and should not be used to calculate unknowns. A standard curve should be generated each time the assay is performed.

Specification

Product Description	Gfra1 (Mouse) ELISA Kit is a sandwich enzyme-linked immunosorbent assay for quantitative detection of mouse Gfra1 in cell culture supernates, serum and plasma (heparin, EDTA, citrate).
Suitable Sample	Cell culture supernates, serum and plasma (heparin, EDTA, citrate)
Sample Volume	100 μ L
Label	HRP-conjugated
Detection Method	Colorimetric
Assay Type	Quantitative
Calibration Range	15.6 to 1000 pg/mL
Reactivity	Mouse
Regulatory Status	For research use only (RUO)
Quality Control Testing	Standard curve The standard curve is for the purpose of illustration only and should not be used to calculate unknowns. A standard curve should be generated each time the assay is performed.
Storage Instruction	Store at 4°C for six months. For long term storage store at -20°C. Avoid repeated freezing and thawing.

Applications

- Quantification

Gene Info — Gfra1

Entrez GeneID	14585
Protein Accession#	P97785
Gene Name	Gfra1
Gene Alias	AU042498
Gene Description	glial cell line derived neurotrophic factor family receptor alpha 1
Gene Ontology	Hyperlink
Other Designations	GDNFR-alpha GFR alpha-1