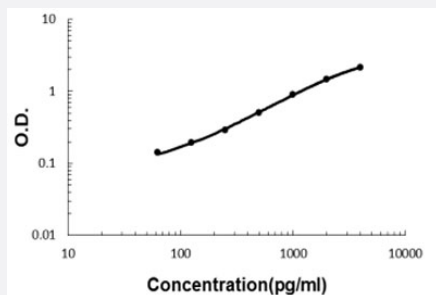


# Sema6a (Rat) ELISA Kit

Catalog # KA5912      Size 1 Kit

## Applications



The standard curve is for the purpose of illustration only and should not be used to calculate unknowns. A standard curve should be generated each time the assay is performed.

## Specification

<b>Product Description</b>	Sema6a (Rat) ELISA Kit is a sandwich enzyme-linked immunosorbent assay for quantitative detection of rat Sema6a in cell culture supernates, serum and plasma (heparin, EDTA, citrate).
<b>Suitable Sample</b>	Cell culture supernates, serum and plasma (heparin, EDTA, citrate)
<b>Sample Volume</b>	100 $\mu$ L
<b>Label</b>	HRP-conjugated
<b>Detection Method</b>	Colorimetric
<b>Assay Type</b>	Quantitative
<b>Calibration Range</b>	62.5 to 4000 pg/mL
<b>Reactivity</b>	Rat
<b>Regulatory Status</b>	For research use only (RUO)
<b>Quality Control Testing</b>	Standard curve The standard curve is for the purpose of illustration only and should not be used to calculate unknowns. A standard curve should be generated each time the assay is performed.
<b>Storage Instruction</b>	Store at 4°C for six months. For long term storage store at -20°C. Avoid repeated freezing and thawing.

## Applications

- Quantification

## Gene Info — Sema6a

Entrez GeneID	<a href="#">361324</a>
---------------	------------------------

Protein Accession#	<a href="#">D3ZAX7</a>
--------------------	------------------------

Gene Name	Sema6a
-----------	--------

Gene Alias	-
------------	---

Gene Description	sema domain, transmembrane domain (TM), and cytoplasmic domain, (semaphorin) 6A
------------------	---

Gene Ontology	<a href="#">Hyperlink</a>
---------------	---------------------------

Gene Summary	sema domain
--------------	-------------

Other Designations	semaphorin 6A-1
--------------------	-----------------