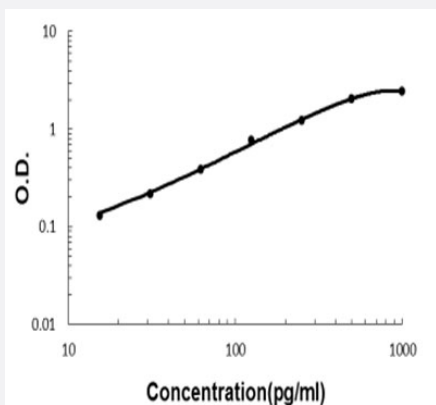


# Cd69 (Mouse) ELISA Kit

Catalog # KA5908

Size 1 Kit

## Applications



The standard curve is for the purpose of illustration only and should not be used to calculate unknowns. A standard curve should be generated each time the assay is performed.

## Specification

### Product Description

Cd69 (Mouse) ELISA Kit is a sandwich enzyme-linked immunosorbent assay for quantitative detection of mouse Cd69 in cell culture supernates, serum and plasma (heparin, EDTA, citrate).

### Suitable Sample

Cell culture supernates, serum and plasma (heparin, EDTA, citrate)

### Sample Volume

100 uL

### Label

HRP-conjugated

### Detection Method

Colorimetric

### Assay Type

Quantitative

### Calibration Range

15.6 to 1000 pg/mL

### Reactivity

Mouse

### Regulatory Status

For research use only (RUO)

### Quality Control Testing

Standard curve

The standard curve is for the purpose of illustration only and should not be used to calculate unknowns. A standard curve should be generated each time the assay is performed.

**Storage Instruction**

Store at 4°C for six months. For long term storage store at -20°C.  
Avoid repeated freezing and thawing.

## Applications

- Quantification

## Gene Info — Cd69

<b>Entrez GeneID</b>	<a href="#">12515</a>
----------------------	-----------------------

<b>Protein Accession#</b>	<a href="#">P37217</a>
---------------------------	------------------------

<b>Gene Name</b>	Cd69
------------------	------

<b>Gene Alias</b>	5830438K24Rik, AI452015, AIM, VEA
-------------------	-----------------------------------

<b>Gene Description</b>	CD69 antigen
-------------------------	--------------

<b>Gene Ontology</b>	<a href="#">Hyperlink</a>
----------------------	---------------------------

<b>Other Designations</b>	Early activation antigen CD69 Very Early Activation Antigen
---------------------------	---