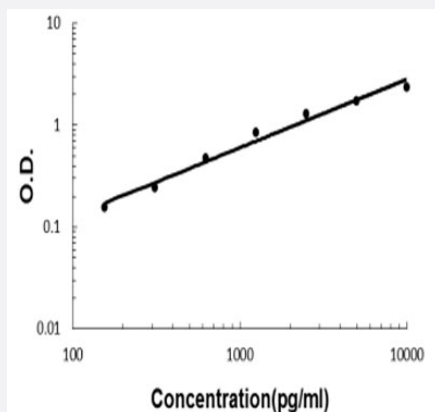


# CLEC14A (Human) ELISA Kit

Catalog # KA5906

Size 1 Kit

## Applications



The standard curve is for the purpose of illustration only and should not be used to calculate unknowns. A standard curve should be generated each time the assay is performed.

## Specification

<b>Product Description</b>	CLEC14A (Human) ELISA Kit is a sandwich enzyme-linked immunosorbent assay for quantitative detection of human CLEC14A in cell culture supernates, serum and plasma (heparin, EDTA, citrate).
<b>Suitable Sample</b>	Cell culture supernates, serum and plasma (heparin, EDTA, citrate)
<b>Sample Volume</b>	100 uL
<b>Label</b>	HRP-conjugated
<b>Detection Method</b>	Colorimetric
<b>Assay Type</b>	Quantitative
<b>Calibration Range</b>	156 to 10000 pg/mL
<b>Reactivity</b>	Human
<b>Regulatory Status</b>	For research use only (RUO)
<b>Quality Control Testing</b>	Standard curve The standard curve is for the purpose of illustration only and should not be used to calculate unknowns. A standard curve should be generated each time the assay is performed.

**Storage Instruction**

Store at 4°C for six months. For long term storage store at -20°C.  
Avoid repeated freezing and thawing.

## Applications

- Quantification

## Gene Info — CLEC14A

Entrez GeneID	<a href="#">161198</a>
---------------	------------------------

Protein Accession#	<a href="#">Q86T13</a>
--------------------	------------------------

Gene Name	CLEC14A
-----------	---------

Gene Alias	C14orf27, CEG1
------------	----------------

Gene Description	C-type lectin domain family 14, member A
------------------	--

Gene Ontology	<a href="#">Hyperlink</a>
---------------	---------------------------

Gene Summary	O
--------------	---

Other Designations	CLECT and EGF-like domain containing protein OTTHUMP00000178873
--------------------	---