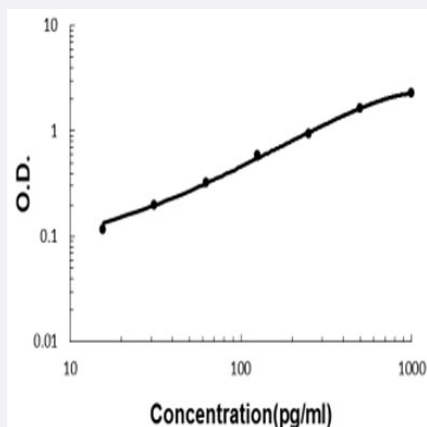


# CLEC4C (Human) ELISA Kit

Catalog # KA5901

Size 1 Kit

## Applications



The standard curve is for the purpose of illustration only and should not be used to calculate unknowns. A standard curve should be generated each time the assay is performed.

## Specification

### Product Description

CLEC4C (Human) ELISA Kit is a sandwich enzyme-linked immunosorbent assay for quantitative detection of human CLEC4C in cell culture supernates, serum and plasma (heparin, EDTA, citrate).

### Suitable Sample

Cell culture supernates, serum and plasma (heparin, EDTA, citrate)

### Sample Volume

100  $\mu$ L

### Label

HRP-conjugated

### Detection Method

Colorimetric

### Assay Type

Quantitative

### Calibration Range

15.6 to 1000 pg/mL

### Reactivity

Human

### Regulatory Status

For research use only (RUO)

### Quality Control Testing

Standard curve

The standard curve is for the purpose of illustration only and should not be used to calculate unknowns. A standard curve should be generated each time the assay is performed.

**Storage Instruction**

Store at 4°C for six months. For long term storage store at -20°C.  
Avoid repeated freezing and thawing.

## Applications

- Quantification

## Gene Info — CLEC4C

**Entrez GeneID** [170482](#)

**Protein Accession#** [Q8WTT0](#)

**Gene Name** CLEC4C

**Gene Alias** BDCA2, CD303, CLECSF11, CLECSF7, DLEC, HECL, MGC125789, MGC125791, MGC125792, MGC125793, PRO34150

**Gene Description** C-type lectin domain family 4, member C

**Omim ID** [606677](#)

**Gene Ontology** [Hyperlink](#)

**Gene Summary** This gene encodes a member of the C-type lectin/C-type lectin-like domain (CTL/CTLD) superfamily. Members of this family share a common protein fold and have diverse functions, such as cell adhesion, cell-cell signalling, glycoprotein turnover, and roles in inflammation and immune response. The encoded type 2 transmembrane protein may play a role in dendritic cell function. Two transcript variants encoding distinct isoforms have been identified for this gene. [provided by RefSeq]

**Other Designations** C-type (calcium dependent, carbohydrate-recognition domain) lectin, superfamily member 11|C-type (calcium dependent, carbohydrate-recognition domain) lectin, superfamily member 7|C-type lectin domain family 4, member C, isoform 1|blood dendritic cell anti