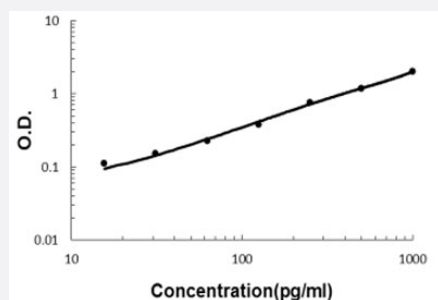


Angptl2 (Mouse) ELISA Kit

Catalog # KA5895 Size 1 Kit

Applications



The standard curve is for the purpose of illustration only and should not be used to calculate unknowns. A standard curve should be generated each time the assay is performed.

Specification

Product Description	Angptl2 (Mouse) ELISA Kit is a sandwich enzyme-linked immunosorbent assay for quantitative detection of mouse Angptl2 in cell culture supernates, serum and plasma (heparin, EDTA).
Suitable Sample	Cell culture supernates, serum and plasma (heparin, EDTA)
Sample Volume	100 μ L
Label	HRP-conjugated
Detection Method	Colorimetric
Assay Type	Quantitative
Calibration Range	15.6 to 1000 pg/mL
Reactivity	Mouse
Regulatory Status	For research use only (RUO)
Quality Control Testing	Standard curve The standard curve is for the purpose of illustration only and should not be used to calculate unknowns. A standard curve should be generated each time the assay is performed.
Storage Instruction	Store at 4°C for six months. For long term storage store at -20°C. Avoid repeated freezing and thawing.

Applications

- Quantification

Gene Info — Angptl2

Entrez GeneID	26360
---------------	-----------------------

Protein Accession#	Q9R045
--------------------	------------------------

Gene Name	Angptl2
-----------	---------

Gene Alias	AI593246, AW260363, Arp2
------------	--------------------------

Gene Description	angiopoietin-like 2
------------------	---------------------

Gene Ontology	Hyperlink
---------------	---------------------------

Other Designations	OTTMUSP00000013478 angiopoietin related protein 2
--------------------	---