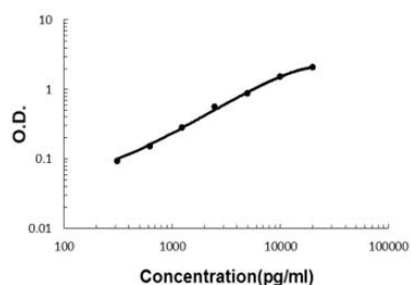


Erap1 (Mouse) ELISA Kit

Catalog # KA5865 Size 1 Kit

Applications



The standard curve is for the purpose of illustration only and should not be used to calculate unknowns. A standard curve should be generated each time the assay is performed.

Specification

Product Description	Erap1 (Mouse) ELISA Kit is a sandwich enzyme-linked immunosorbent assay for quantitative detection of mouse Erap1 in cell culture supernatants, serum and plasma (heparin, EDTA).
Suitable Sample	Cell Culture Supernatants, Plasma (heparin, EDTA) and Serum.
Sample Volume	100 uL
Label	HRP-conjugated
Detection Method	Colorimetric
Assay Type	Quantitative
Calibration Range	312 to 20000 pg/mL
Reactivity	Mouse
Regulatory Status	For research use only (RUO)
Quality Control Testing	Standard curve The standard curve is for the purpose of illustration only and should not be used to calculate unknowns. A standard curve should be generated each time the assay is performed.

Storage Instruction

Store the kit at -20°C.
Avoid repeated freezing and thawing.

Applications

- Quantification

Gene Info — Erap1

Entrez GeneID	80898
Protein Accession#	Q9EQH2
Gene Name	Erap1
Gene Alias	Arts1, ERAAP, PILSA, PILSAP
Gene Description	endoplasmic reticulum aminopeptidase 1
Gene Ontology	Hyperlink
Other Designations	adipocyte-derived leucine aminopeptidase type 1 tumor necrosis factor receptor shedding amino peptidase regulator