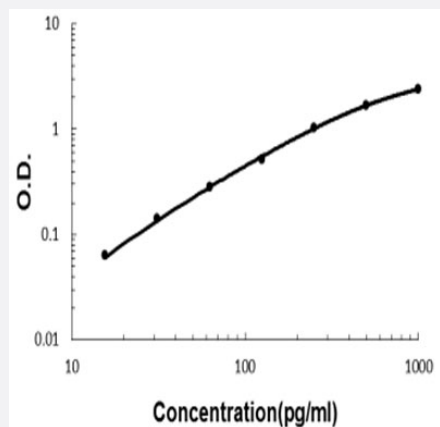


# Ltbr (Mouse) ELISA Kit

Catalog # KA5859

Size 1 Kit

## Applications



The standard curve is for the purpose of illustration only and should not be used to calculate unknowns. A standard curve should be generated each time the assay is performed.

## Specification

<b>Product Description</b>	Ltbr (Mouse) ELISA Kit is a sandwich enzyme-linked immunosorbent assay for quantitative detection of mouse Ltbr in cell culture supernates, serum and plasma (heparin, EDTA).
<b>Suitable Sample</b>	Cell culture supernates, serum and plasma (heparin, EDTA)
<b>Sample Volume</b>	100 uL
<b>Label</b>	HRP-conjugated
<b>Detection Method</b>	Colorimetric
<b>Assay Type</b>	Quantitative
<b>Calibration Range</b>	15.6 to 1000 pg/mL
<b>Reactivity</b>	Mouse
<b>Regulatory Status</b>	For research use only (RUO)
<b>Quality Control Testing</b>	Standard curve The standard curve is for the purpose of illustration only and should not be used to calculate unknowns. A standard curve should be generated each time the assay is performed.

**Storage Instruction**

Store at 4°C for six months. For long term storage store at -20°C.  
Avoid repeated freezing and thawing.

## Applications

- Quantification

## Gene Info — Ltbr

**Entrez GeneID** [17000](#)

**Protein Accession#** [P50284](#)

**Gene Name** Ltbr

**Gene Alias** AI256028, CD18, LTbetaR, Ltbr, TNF-R-III, TNFCR, TNFR-RP, TNFR2-RP, TNFRrp, Tnfr, Tnfrsf3

**Gene Description** lymphotoxin B receptor

**Gene Ontology** [Hyperlink](#)

**Gene Summary** member 3

**Other Designations** LT beta-R|LT-beta receptor|TNF receptor-related protein|tumor necrosis factor receptor superfamily, member 3