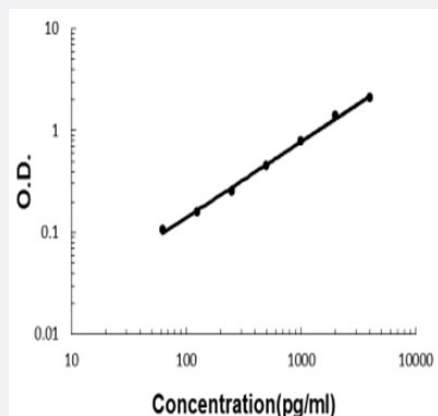


Clec7a (Mouse) ELISA Kit

Catalog # KA5854

Size 1 Kit

Applications



The standard curve is for the purpose of illustration only and should not be used to calculate unknowns. A standard curve should be generated each time the assay is performed.

Specification

Product Description	Clec7a (Mouse) ELISA Kit is a sandwich enzyme-linked immunosorbent assay for quantitative detection of mouse Clec7a in cell culture supernates, serum and plasma (heparin, EDTA).
Suitable Sample	Cell culture supernates, serum and plasma (heparin, EDTA)
Sample Volume	100 uL
Label	HRP-conjugated
Detection Method	Colorimetric
Assay Type	Quantitative
Calibration Range	62.5 to 4000 pg/mL
Reactivity	Mouse
Regulatory Status	For research use only (RUO)
Quality Control Testing	Standard curve The standard curve is for the purpose of illustration only and should not be used to calculate unknowns. A standard curve should be generated each time the assay is performed.

Storage Instruction

Store at 4°C for six months. For long term storage store at -20°C.
Avoid repeated freezing and thawing.

Applications

- Quantification

Gene Info — Clec7a

Entrez GeneID	56644
Protein Accession#	Q6QLQ4
Gene Name	Clec7a
Gene Alias	BGR, Clecsf12, beta-GR
Gene Description	C-type lectin domain family 7, member a
Gene Ontology	Hyperlink
Gene Summary	O
Other Designations	C-type (calcium dependent, carbohydrate recognition domain) lectin, superfamily member 12 beta-glucan receptor dectin-1 dendritic cell-associated C-type lectin 1