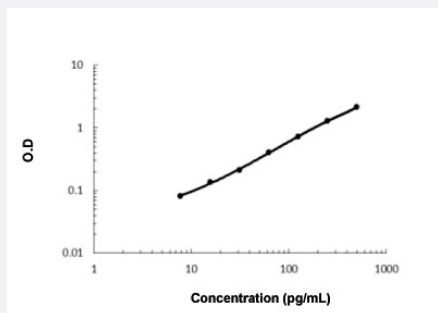


# STC2 (Human) ELISA Kit

Catalog # KA5841      Size 1 Kit

## Applications



The standard curve is for the purpose of illustration only and should not be used to calculate unknowns. A standard curve should be generated each time the assay is performed.

## Specification

<b>Product Description</b>	STC2 (Human) ELISA Kit is a sandwich enzyme-linked immunosorbent assay for the quantitative measurement of human STC2.
<b>Suitable Sample</b>	Cell Culture Supernates, Serum
<b>Sample Volume</b>	100 uL
<b>Label</b>	HRP-conjugated
<b>Detection Method</b>	Colorimetric
<b>Assay Type</b>	Quantitative
<b>Calibration Range</b>	7.8 to 500 pg/mL
<b>Reactivity</b>	Human
<b>Regulatory Status</b>	For research use only (RUO)
<b>Quality Control Testing</b>	Standard curve The standard curve is for the purpose of illustration only and should not be used to calculate unknowns. A standard curve should be generated each time the assay is performed.
<b>Storage Instruction</b>	Store at 4°C for 6 months, at -20°C for 12 months. Avoid multiple freeze-thaw cycles.

## Applications

- Quantification

## Gene Info — STC2

Entrez GeneID [8614](#)

Protein Accession# [O76061](#)

Gene Name STC2

Gene Alias STC-2, STCRP

Gene Description stanniocalcin 2

Omim ID [603665](#)

Gene Ontology [Hyperlink](#)

**Gene Summary** This gene encodes a secreted, homodimeric glycoprotein that is expressed in a wide variety of tissues and may have autocrine or paracrine functions. The encoded protein has 10 of its 15 cysteine residues conserved among stanniocalcin family members and is phosphorylated by casein kinase 2 exclusively on its serine residues. Its C-terminus contains a cluster of histidine residues which may interact with metal ions. The protein may play a role in the regulation of renal and intestinal calcium and phosphate transport, cell metabolism, or cellular calcium/phosphate homeostasis. Constitutive overexpression of human stanniocalcin 2 in mice resulted in pre- and postnatal growth restriction, reduced bone and skeletal muscle growth, and organomegaly. Expression of this gene is induced by estrogen and altered in some breast cancers. [provided by RefSeq]

**Other Designations** STC-related protein|stanniocalcin-related protein

## Disease

- [Amyotrophic lateral sclerosis](#)
- [Anoxia](#)
- [Genetic Predisposition to Disease](#)
- [Hyperparathyroidism](#)