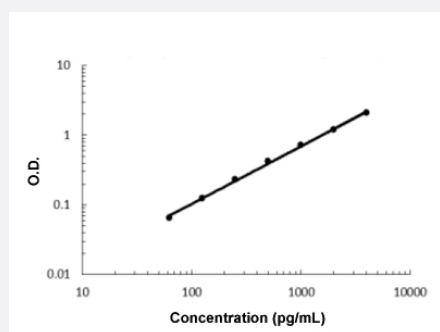


# TREML2 (Human) ELISA Kit

Catalog # KA5839      Size 1 Kit

## Applications



The standard curve is for the purpose of illustration only and should not be used to calculate unknowns. A standard curve should be generated each time the assay is performed.

## Specification

<b>Product Description</b>	TREML2 (Human) ELISA Kit is a sandwich enzyme-linked immunosorbent assay for the quantitative measurement of human TREML2.
<b>Suitable Sample</b>	Cell Culture Supernates, Plasma (EDTA, Heparin), and Serum.
<b>Sample Volume</b>	100 uL
<b>Label</b>	HRP-conjugated
<b>Detection Method</b>	Colorimetric
<b>Assay Type</b>	Quantitative
<b>Calibration Range</b>	62.5 to 4000 pg/mL
<b>Reactivity</b>	Human
<b>Regulatory Status</b>	For research use only (RUO)
<b>Quality Control Testing</b>	Standard curve The standard curve is for the purpose of illustration only and should not be used to calculate unknowns. A standard curve should be generated each time the assay is performed.
<b>Storage Instruction</b>	Store at 4°C for 6 months, at -20°C for 12 months. Avoid multiple freeze-thaw cycles.

## Applications

- Quantification

## Gene Info — TREML2

Entrez GeneID	<a href="#">79865</a>
Protein Accession#	<a href="#">Q5T2D2</a>
Gene Name	TREML2
Gene Alias	C6orf76, FLJ13693, MGC149715, MGC149716, TLT2, dJ238O23.1
Gene Description	triggering receptor expressed on myeloid cells-like 2
Omim ID	<a href="#">609715</a>
Gene Ontology	<a href="#">Hyperlink</a>
Gene Summary	TREML2 is located in a gene cluster on chromosome 6 with the single Ig variable (IgV) domain activating receptors TREM1 (MIM 605085) and TREM2 (MIM 605086), but it has distinct structural and functional properties (Allcock et al., 2003 [PubMed 12645956]).[supplied by OMIM]
Other Designations	OTTHUMP00000017974 TREM-like transcript 2

## Disease

- [Tobacco Use Disorder](#)