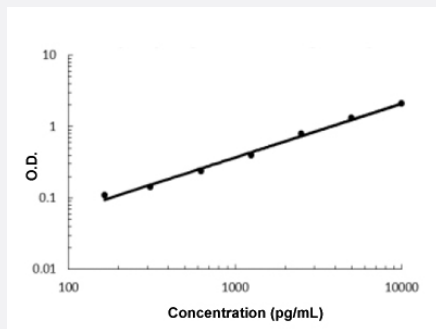


CRELD2 (Human) ELISA Kit

Catalog # KA5837

Size 1 Kit

Applications



The standard curve is for the purpose of illustration only and should not be used to calculate unknowns. A standard curve should be generated each time the assay is performed.

Specification

Product Description	CRELD2 (Human) ELISA Kit is a sandwich enzyme-linked immunosorbent assay for the quantitative measurement of human CRELD2.
Suitable Sample	Cell Culture Supernates, Plasma (EDTA, Heparin), and Serum.
Sample Volume	100 μ L
Label	HRP-conjugated
Detection Method	Colorimetric
Assay Type	Quantitative
Calibration Range	156 to 10000 pg/mL
Reactivity	Human
Regulatory Status	For research use only (RUO)
Quality Control Testing	Standard curve The standard curve is for the purpose of illustration only and should not be used to calculate unknowns. A standard curve should be generated each time the assay is performed.
Storage Instruction	Store at 4°C for 6 months, at -20°C for 12 months. Avoid multiple freeze-thaw cycles.

Applications

- Quantification

Gene Info — CRELD2

Entrez GeneID	79174
---------------	-----------------------

Protein Accession#	Q6UXH1
--------------------	------------------------

Gene Name	CRELD2
-----------	--------

Gene Alias	DKFZp667O055, MGC11256
------------	------------------------

Gene Description	cysteine-rich with EGF-like domains 2
------------------	---------------------------------------

Omim ID	607171
---------	------------------------

Gene Ontology	Hyperlink
---------------	---------------------------

Other Designations	-
--------------------	---