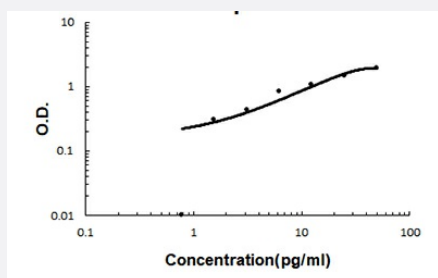


SERPIND1 (Human) ELISA Kit

Catalog # KA5817

Size 1 Kit

Applications



The standard curve is for the purpose of illustration only and should not be used to calculate unknowns. A standard curve should be generated each time the assay is performed.

Specification

Product Description	SERPIND1 (Human) ELISA Kit is a sandwich enzyme-linked immunosorbent assay for the quantitative measurement of human SERPIND1.
Suitable Sample	Cell Culture Supernates, Plasma (EDTA, Citrate), Serum and Urine.
Sample Volume	100 μ L
Label	HRP-conjugated
Detection Method	Colorimetric
Assay Type	Quantitative
Calibration Range	0.78 to 50 ng/mL
Reactivity	Human
Regulatory Status	For research use only (RUO)
Quality Control Testing	Standard curve The standard curve is for the purpose of illustration only and should not be used to calculate unknowns. A standard curve should be generated each time the assay is performed.
Storage Instruction	Store at 4°C for 6 months, at -20°C for 12 months. Avoid multiple freeze-thaw cycles.

Applications

- Quantification

Gene Info — SERPIND1

Entrez GeneID [3053](#)

Protein Accession# [P05546](#)

Gene Name SERPIND1

Gene Alias D22S673, HC2, HCF2, HCII, HLS2, LS2

Gene Description serpin peptidase inhibitor, clade D (heparin cofactor), member 1

Omim ID [142360](#)

Gene Ontology [Hyperlink](#)

Gene Summary The product encoded by this gene is a serine proteinase inhibitor which rapidly inhibits thrombin in the presence of dermatan sulfate or heparin. The gene contains five exons and four introns. This protein shares homology with antithrombin III and other members of the alpha 1-antitrypsin superfamily. Mutations in this gene are associated with heparin cofactor II deficiency. [provided by RefSeq]

Other Designations heparin cofactor III|euserpin 2|serine (or cysteine) proteinase inhibitor, clade D (heparin cofactor), member 1

Pathway

- [Complement and coagulation cascades](#)

Disease

- [Cardiovascular Diseases](#)
- [Diabetes Mellitus](#)
- [Edema](#)