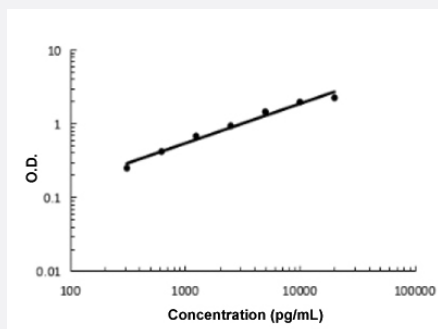


CREG1 (Human) ELISA Kit

Catalog # KA5807 Size 1 Kit

Applications



The standard curve is for the purpose of illustration only and should not be used to calculate unknowns. A standard curve should be generated each time the assay is performed.

Specification

Product Description	CREG1 (Human) ELISA Kit is a sandwich enzyme-linked immunosorbent assay for the quantitative measurement of human CREG1.
Suitable Sample	Cell Culture Supernates, Plasma (EDTA, Heparin), and Serum.
Sample Volume	100 uL
Label	HRP-conjugated
Detection Method	Colorimetric
Assay Type	Quantitative
Calibration Range	312 to 20000 pg/mL
Reactivity	Human
Regulatory Status	For research use only (RUO)
Quality Control Testing	Standard curve The standard curve is for the purpose of illustration only and should not be used to calculate unknowns. A standard curve should be generated each time the assay is performed.
Storage Instruction	Store at 4°C for 6 months, at -20°C for 12 months. Avoid multiple freeze-thaw cycles.

Applications

- Quantification

Gene Info — CREG1

Entrez GeneID [8804](#)

Protein Accession# [O75629](#)

Gene Name CREG1

Gene Alias CREG

Gene Description cellular repressor of E1A-stimulated genes 1

Gene Ontology [Hyperlink](#)

Gene Summary The adenovirus E1A protein both activates and represses gene expression to promote cellular proliferation and inhibit differentiation. The protein encoded by this gene antagonizes transcriptional activation and cellular transformation by E1A. This protein shares limited sequence similarity with E1A and binds both the general transcription factor TBP and the tumor suppressor pRb in vitro. This gene may contribute to the transcriptional control of cell growth and differentiation. [provided by RefSeq]

Other Designations OTTHUMP00000032606|cellular repressor of E1A-stimulated genes

Disease

- [Genetic Predisposition to Disease](#)
- [Hypertension](#)
- [Osteoporosis](#)