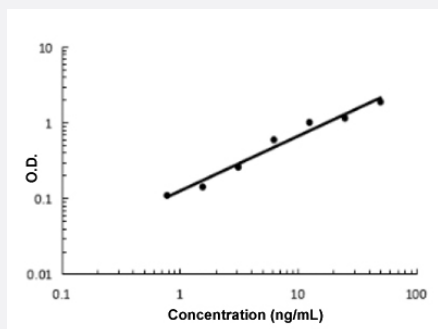


# FCRL5 (Human) ELISA Kit

Catalog # KA5787      Size 1 Kit

## Applications



The standard curve is for the purpose of illustration only and should not be used to calculate unknowns. A standard curve should be generated each time the assay is performed.

## Specification

<b>Product Description</b>	FCRL5 (Human) ELISA Kit is a sandwich enzyme-linked immunosorbent assay for the quantitative measurement of human FCRL5.
<b>Suitable Sample</b>	Cell Culture Supernates, Plasma (EDTA, Heparin), and Serum.
<b>Sample Volume</b>	100 $\mu$ L
<b>Label</b>	HRP-conjugated
<b>Detection Method</b>	Colorimetric
<b>Assay Type</b>	Quantitative
<b>Calibration Range</b>	0.78 to 50 ng/mL
<b>Reactivity</b>	Human
<b>Regulatory Status</b>	For research use only (RUO)
<b>Quality Control Testing</b>	Standard curve The standard curve is for the purpose of illustration only and should not be used to calculate unknowns. A standard curve should be generated each time the assay is performed.
<b>Storage Instruction</b>	Store at 4°C for 6 months, at -20°C for 12 months. Avoid multiple freeze-thaw cycles.

## Applications

- Quantification

## Gene Info — FCRL5

Entrez GeneID	<a href="#">83416</a>
Protein Accession#	<a href="#">Q96RD9</a>
Gene Name	FCRL5
Gene Alias	BXMAS1, CD307, DKFZp667E2019, DKFZp667F216, FCRH5, FLJ00333, FLJ00397, IRTA2, MGC119590, MGC119592, MGC119593, PRO820
Gene Description	Fc receptor-like 5
Omim ID	<a href="#">605877</a>
Gene Ontology	<a href="#">Hyperlink</a>
Other Designations	OTTHUMP00000018869immunoglobulin superfamily receptor translocation associated 2 (IRTA2 )

## Disease

- [Kidney Failure](#)
- [Spondylitis](#)