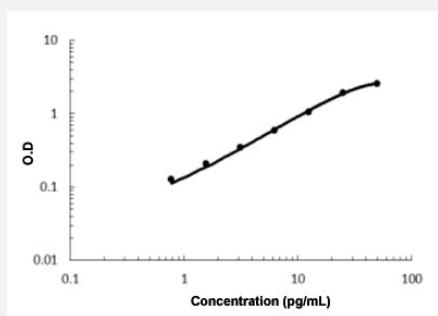


CA2 (Human) ELISA Kit

Catalog # KA5774 Size 1 Kit

Applications



The standard curve is for the purpose of illustration only and should not be used to calculate unknowns. A standard curve should be generated each time the assay is performed.

Specification

Product Description	CA2 (Human) ELISA Kit is a sandwich enzyme-linked immunosorbent assay for the quantitative measurement of human CA2.
Suitable Sample	Cell Culture Supernates, Plasma (Heparin, EDTA, Citrate), Serum, and Urine.
Sample Volume	100 μ L
Label	HRP-conjugated
Detection Method	Colorimetric
Assay Type	Quantitative
Calibration Range	0.78 to 50 ng/mL
Reactivity	Human
Regulatory Status	For research use only (RUO)
Quality Control Testing	Standard curve The standard curve is for the purpose of illustration only and should not be used to calculate unknowns. A standard curve should be generated each time the assay is performed.
Storage Instruction	Store at 4°C for 6 months, at -20°C for 12 months. Avoid multiple freeze-thaw cycles.

Applications

- Quantification

Gene Info — CA2

Entrez GeneID	760
Protein Accession#	P00918
Gene Name	CA2
Gene Alias	CA-II, CAll, Car2
Gene Description	carbonic anhydrase II
Omim ID	259730 611492
Gene Ontology	Hyperlink
Gene Summary	CA2 is one of several (at least 7) isozymes of carbonic anhydrase. Carbonic anhydrase catalyzes reversible hydration of carbon dioxide. Defects in this enzyme are associated with osteopetrosis and renal tubular acidosis. [provided by RefSeq]
Other Designations	carbonate dehydratase II carbonic anhydrase B carbonic dehydratase

Pathway

- [Nitrogen metabolism](#)

Disease

- [Genetic Predisposition to Disease](#)
- [Osteoporosis](#)