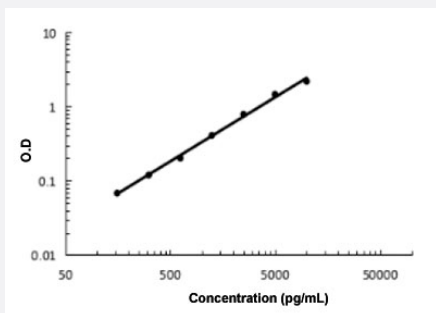


Cpe (Rat) ELISA Kit

Catalog # KA5770 Size 1 Kit

Applications



The standard curve is for the purpose of illustration only and should not be used to calculate unknowns. A standard curve should be generated each time the assay is performed.

Specification

Product Description	Cpe (Rat) ELISA Kit is a sandwich enzyme-linked immunosorbent assay for the quantitative measurement of rat Cpe.
Suitable Sample	Cell Culture Supernates, Plasma (Heparin, EDTA), and Serum.
Sample Volume	100 μ L
Label	HRP-conjugated
Detection Method	Colorimetric
Assay Type	Quantitative
Calibration Range	156 to 10000 ng/mL
Reactivity	Rat
Regulatory Status	For research use only (RUO)
Quality Control Testing	Standard curve The standard curve is for the purpose of illustration only and should not be used to calculate unknowns. A standard curve should be generated each time the assay is performed.
Storage Instruction	Store at 4°C for 6 months, at -20°C for 12 months. Avoid multiple freeze-thaw cycles.

Applications

- Quantification

Gene Info — Cpe

Entrez GeneID	25669
---------------	-----------------------

Protein Accession#	P15087
--------------------	------------------------

Gene Name	Cpe
-----------	-----

Gene Alias	CARBE, Cph, MGC93638
------------	----------------------

Gene Description	carboxypeptidase E
------------------	--------------------

Gene Ontology	Hyperlink
---------------	---------------------------

Other Designations	-
--------------------	---