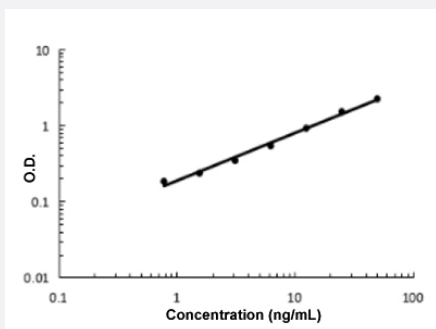


Plxnb2 (Rat) ELISA Kit

Catalog # KA5765 Size 1 Kit

Applications



The standard curve is for the purpose of illustration only and should not be used to calculate unknowns. A standard curve should be generated each time the assay is performed.

Specification

Product Description	Plxnb2 (Rat) ELISA Kit is a sandwich enzyme-linked immunosorbent assay for the quantitative measurement of rat Plxnb2.
Suitable Sample	Cell Culture Supernates, Plasma (EDTA, Heparin), and Serum.
Sample Volume	100 μ L
Label	HRP-conjugated
Detection Method	Colorimetric
Assay Type	Quantitative
Calibration Range	0.78 to 50 ng/mL
Reactivity	Rat
Regulatory Status	For research use only (RUO)
Quality Control Testing	Standard curve The standard curve is for the purpose of illustration only and should not be used to calculate unknowns. A standard curve should be generated each time the assay is performed.
Storage Instruction	Store at 4°C for 6 months, at -20°C for 12 months. Avoid multiple freeze-thaw cycles.

Applications

- Quantification

Gene Info — Plxnb2

Entrez GeneID	315217
---------------	------------------------

Protein Accession#	D3ZQ57
--------------------	------------------------

Gene Name	Plxnb2
-----------	--------

Gene Alias	-
------------	---

Gene Description	plexin B2
------------------	-----------

Gene Ontology	Hyperlink
---------------	---------------------------

Other Designations	-
--------------------	---